

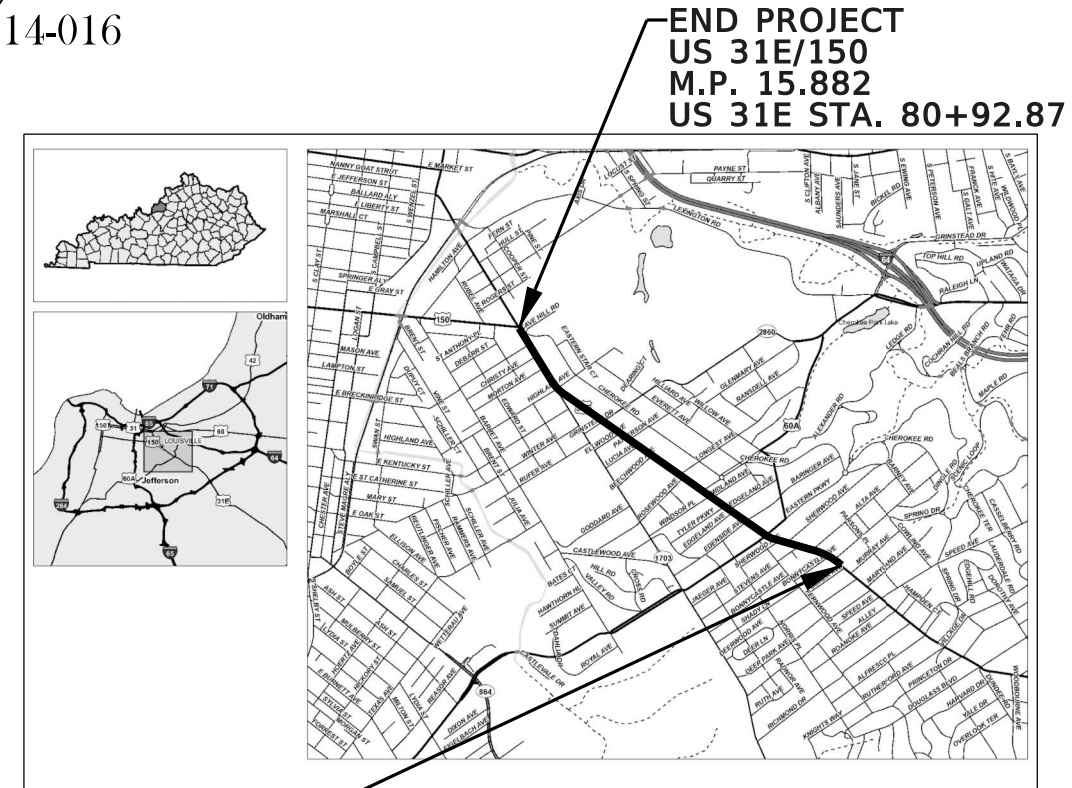
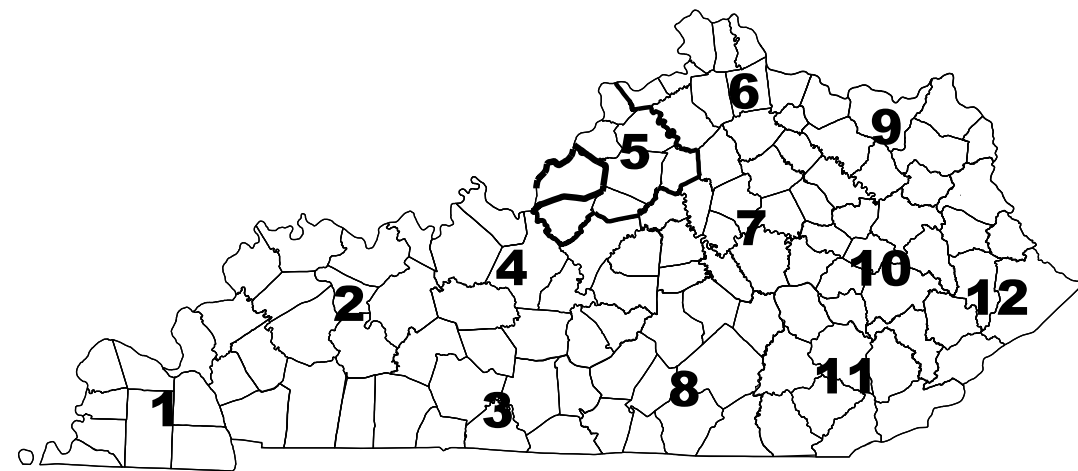


COMMONWEALTH OF KENTUCKY

DEPARTMENT OF HIGHWAYS

PLANS OF PROPOSED PROJECT JEFFERSON County

US 31E/150
FD52 056 031 E 014-016



BEGIN PROJECT
US 31E/150
M.P. 14.390
STA. 1+53.40

END PROJECT
US 31E/150
M.P. 15.882
US 31E STA. 80+92.87

LAYOUT MAP



**PRELIMINARY
SUBJECT TO CHANGE**

THIS PROJECT IS ON THE NH SYSTEM

THE CONTROL OF ACCESS ON THIS PROJECT SHALL BE BY PERMIT

THESE PLANS ARE FOR MILLING, DRAIN, SURFACING, AND SIGNALS

US 31E/150

DESIGN CRITERIA

CLASS OF HIGHWAY PRINCIPAL ARTERIAL
 TYPE OF TERRAIN LARGE URBANIZED AREA
 DESIGN SPEED 35
 REQUIRED NPSD X
 REQUIRED PSD X
 LEVEL OF SERVICE X
 ADT PRESENT (2012) 22376
 ADT FUTURE (X) X
 DHV 2237.6
 D % X
 T % 5.879

GEOGRAPHIC COORDINATES

LATITUDE 38 DEGREES 14 MINUTES 10.06 SECONDS NORTH
 LONGITUDE -85 DEGREES 43 MINUTES .615 SECONDS WEST

DESIGNED

% RESTRICTED SD X
 LEVEL OF SERVICE X
 MAX. DISTANCE W/O PASSING X

INDEX OF SHEETS

SHEET NUMBER	DESCRIPTION
R001	LAYOUT SHEET
R002	GENERAL, PAVING, AND TRAFFIC LOOPS SUMMARIES
R003	GENERAL NOTES
R004	LEGEND SHEET
R005	UTILITY OWNERS
R006-R020	PLAN SHEETS
R021	COORDINATE CONTROL
R022	SIDEWALK UNDERDRAIN DETAIL SHEET
R023	PEDESTRIAN SIGNAL DETAIL

STANDARD DRAWINGS

LENGTH	ADDED DEDUCTED	FOR EQUALITIES	NOT INCLUDED	RAILROAD CROSSINGS NO.	BRIDGES
<u>8094.1</u> LIN. FT. <u>1.53</u> MILES	<input checked="" type="checkbox"/>	<input checked="" type="checkbox"/>	<input type="checkbox"/>	<u>X</u> LIN. FT.	<u>X</u> LIN. FT.
<u>X</u> LIN. FT. <u>X</u> MILES	<input type="checkbox"/>	<input checked="" type="checkbox"/>	<input type="checkbox"/>	<u>X</u> LIN. FT.	<u>X</u> LIN. FT.
<u>X</u> LIN. FT. <u>X</u> MILES	<input type="checkbox"/>	<input checked="" type="checkbox"/>	<input type="checkbox"/>	<u>X</u> LIN. FT.	<u>X</u> LIN. FT.
<u>X</u> LIN. FT. <u>X</u> MILES	<input type="checkbox"/>	<input checked="" type="checkbox"/>	<input type="checkbox"/>	<u>X</u> LIN. FT.	<u>X</u> LIN. FT.

PROJECT NUMBER: 05-09030.00

PROJECT DESCRIPTION: ASPHALT RESURFACING WITH INSTALLATION OF CURB EXTENSIONS AND PEDESTRIAN IMPROVEMENTS ALONG US 31E/150

RECOMMENDED BY: KEVIN BAILEY, PE X PROJECT MANAGER DATE: _____

PLAN APPROVED BY: _____ STATE HIGHWAY ENGINEER DATE: _____

LETTING DATE: 5/26/2022

ITEM NO. 05-09030.00 COUNTY OF JEFFERSON

SHEET NO. R001

GENERAL SUMMARY							
ITEM	DESCRIPTION	BID ITEM NOTE*	UNIT	MAINLINE	APPROACH	ENTRANCE	TOTAL PROJECT
1719	ADJUST INLET		EACH	1			1
1720	RECONSTRUCT INLET	1	EACH	2			2
1792	ADJUST MANHOLE		EACH	10			10
1810	STANDARD CURB AND GUTTER	1	LF	24			24
1875	STANDARD HEADER CURB	1	LFT	1107			1107
1904	REMOVE, CURB		LFT	50			50
2200	ROADWAY EXCAVATION	4	CUYD	124			124
2460	REMOVE TREES OR STUMPS		EACH	1			1
2562	TEMPORARY SIGNS		SQFT	790			790
2568	MOBILIZATION		LS	1			1
2569	DEMOBILIZATION		LS	1			1
2650	MAINTAIN & CONTROL TRAFFIC		LS	1			1
2671	PORTABLE CHANGEABLE MESSAGE SIGN		EACH	2			2
2676	MOBILIZATION FOR MILL & TEXT		LS	1			1
2677	ASPHALT PAVE MILLING & TEXTURING		TON	3361			3361
2720	SIDEWALK - 4 IN CONCRETE	1	SQYD	651			651
2721	REMOVE CONCRETE SIDEWALK	4	SQYD	65 566			65 566
2726	STAKING		LS	1			1
2775	ARROW PANEL		EACH	4			4
3425	ADJUST WATER VALVE		EACH	15			15
4793	CONDUIT - 1 1/4 IN	2	LF	244			244
4811	ELECTRICAL JUNCTION BOX TYPE B		EACH	10			10
4821	OPEN CUT ROADWAY		LF	244			244
4830	LOOP WIRE		LF	6975			6975
4850	CABLE - NO. 14/1 PAIR		LF	1100			1100
4882	SIGNAL PEDESTAL	3	EACH	3			3
4895	LOOP SAW SLOT AND FILL		LF	2670			2670
5952	TEMP MULCH		SQYD	282			282
6600	REMOVE PAVEMENT MARKER TYPE V		EACH	300			300
10020NS	FUEL ADJUSTMENT		DOLL	5520			5520
10030NS	ASPHALT ADJUSTMENT		DOLL	13863			13863
20071EC	JOINT ADHESIVE		LF	26000			26000
20550ND	SAW CUT		LFT	1138			1138
23158ES	DETECTABLE WARNINGS		SQFT	482			482
23158ES	DETECTABLE WARNINGS - RETROFIT		SQFT	122			122
23235EC	INSTALL PEDESTAL POST	5	EACH	1			1
24890EC	SIDEWALK-8 IN CONCRETE	1	SQYD	14			14
24963ED	LOOP TEST		EACH	19			19
24970EC	ASPHALT MATERIAL FOR TACK NON-TRACKING		TON	17			17
25071ED	SIDEWALK UNDERDRAIN	6	EACH	46			46

***BID ITEM NOTES**

- 1720, 1810, 1875, 2720, 24890EC, 25071ED - HISTORIC CONCRETE MIX PROVIDE A CLASS A CONCRETE MIX CONFORMING TO KENTUCKY STANDARD SPECIFICATION SECTION 601 WITH THE FOLLOWING EXCEPTIONS:
 -APPROVED COARSE AGGREGATE SHALL BE #8 OR #9M RIVER GRAVEL. THE COARSE AGGREGATE SHALL BE AT LEAST 50% OF THE TOTAL AGGREGATE IN THE MIX WITH RIVER SAND BEING THE FINE AGGREGATE.
 -ACHIEVE A "HISTORIC" WEATHERED FINISH BY USE OF A WATER BASE PIGMENTED, TOP SURFACE RETARDER RESULTING IN A SURFACE DEPTH ETCH OF UP TO 1/8 INCH. APPLY AND REMOVE THE SURFACE RETARDER IN ACCORDANCE WITH MANUFACTURER'S RECOMMENDATIONS.
 -PLACEMENT AND REMOVAL OF THE SURFACE RETARDER SHALL BE CONSIDERED INCIDENTAL TO THE PLACED CONCRETE.
- 4793 - INCLUDE PULL STRINGS AND CAP ALL ENDS.
- 4882 - PROVIDE TEMPORARY CAP AT TOP OF POST TO PREVENT WATER INTRUSION. WIRING, FUSES, DETECTORS, SIGNS, AND SIGNALS WILL BE INSTALLED BY OTHERS. IF FOUNDATION OR POLE TRANSFORMER BASE DIAMETER IS GREATER THAN 2', COORDINATE RELOCATION WITH ENGINEER.
- ~~40024, 23807EC~~ 2200, 2721 - WHEN SPECIFIED FOR TREE PLANTERS, REMOVAL IS ESTIMATED AT 4.45 SQYD PER LOCATION (10' LONG AND 4' WIDE), AND PAY IS BASED ON MEASUREMENT APPROVED BY ENGINEER. DO NOT DAMAGE ADJACENT SIDEWALK SLABS. SUPPORT ANY SLABS THAT ARE LEFT UNSUPPORTED WITH ENGINEER APPROVAL.
- 23235EC - WIRING, FUSES, DETECTOR, AND SIGN WILL BE INSTALLED BY OTHERS. IF FOUNDATION OR POLE TRANSFORMER BASE DIAMETER IS GREATER THAN 15', COORDINATE RELOCATION WITH ENGINEER.
- 25071ED - DESIGN BASED ON NEENAH R-4994-HB TYPE 'S' FRAME. SUBSTITUTION OF PRODUCT MUST BE APPROVED BY ENGINEER.

PAVING SUMMARY								
ITEM CODE	ITEM	UNIT	MAINLINE	SECONDARY	ENTRANCES	APPROACHES	TEMPORARY	TOTAL PROJECT
324	CL3 ASPH SURF 0.50B PG64-22	TON	3361					3361
190	LEVELING & WEDGING PG64-22	TON	168					168

PAVING AREA						
ITEM	MAINLINE	SECONDARY	ENTRANCES	APPROACHES	TEMPORARY	TOTALS
						SQUARE YARDS
324	CL3 ASPH SURF 0.50B PG64-22					40,743
23019EN	ASPHALT MILLING AND TEXTURING					40,743

MILL DEPTH IS 1.5" AVERAGE AND SURFACING DEPTH IS 1.5" AVERAGE OF CL3 ASPH SURF 0.38B, PG 64-22. CONSIDER THESE DIMENSIONS FOR PAVEMENT THICKNESSES TO BE NOMINAL OR TYPICAL DIMENSIONS. IN ADDITION TO LEVELING AND WEDGING, THE ENGINEER MAY DIRECT OR APPROVE VARYING THE ACTUAL DIMENSIONS TO BE CONSTRUCTED TO FIT EXISTING CONDITIONS.

TRAFFIC LOOPS SUMMARY											
STA.	INTERSECTION	APPROACHES	NO. OF LOOPS		SAW SLOT & FILL	CONDUIT 1 1/4 INCH	OPEN CUT	CABLE 14/1 PAIR	JUNCTION BOX TYPE-B	REMOVE & REPLACE SIDEWALK	LOOP TEST
			EACH	LF							
14+68	EASTERN PARKWAY	NB/SB LEFTS	2	675	270	10	10	250	1	3	2
36+22	LONGEST AVENUE	SB LEFT & SS	2	700	280	10	10	175	1		2
39+46	MID CITY MALL ENTRANCE	NB LEFT	1	350	140	10	10	150	1	3	1
55+52	GRINSTEAD DRIVE	NB/SB LEFTS & SS	6	1900	750	20	20	350	2	5	6
67+10	BAXTER AVENUE/HIGHLAND AVENUE	NB/SB LEFTS & SS	6	2000	800	10	10	175	1	4	6
81+00	BROADWAY/CHEROKEE ROAD	NB LEFT/THRU	2	725	290						2
TOTALS			19	6350	2530	60	60	1100	6	15	19

TRAFFIC LOOPS SUMMARY NOTES:

- SEE SPECIAL NOTE FOR TRAFFIC SIGNAL LOOP DETECTORS FOR ADDITIONAL INFORMATION.
- COORDINATE SIGNAL LOOP LOCATIONS WITH THE PROJECT ENGINEER & DISTRICT 5 TRAFFIC
- QUANTITIES ARE FOR ESTIMATING PURPOSES ONLY AND ARE ALSO INCLUDED IN THE ADJACENT GENERAL SUMMARY TABLE. FIELD MEASURE AND INSPECT ITEMS TO VERIFY QUANTITIES.
- TWO, 1 1/4-INCH CONDUITS MAY BE USED IN LIEU OF A 2-INCH CONDUIT. FIELD VERIFY CONDUIT TO MATCH EXISTING FACILITIES TO TIE-IN TO POLES OR CABINETS.
- ONLY REPLACE EXISTING CONDUIT IF MISSING AND/OR DAMAGED.
- INSTALL NEW LEFT TURN LOOPS & JUNCTION BOXES AS DIRECTED BY D5 TRAFFIC &/OR LOUISVILLE METRO ELECTRICAL. SPLICE LOOP WIRE TO NEW 14/1 PAIR CABLE AND RUN 14/1 PAIR TO THE CABINET. COIL 3' OF 14/1 PAIR CABLE IN THE CABINET AND LABEL ALL WIRES



COMMONWEALTH OF KENTUCKY
DEPARTMENT OF HIGHWAYS



GENERAL, PAVING, AND TRAFFIC LOOPS SUMMARIES

ITEM NO. 05-09030.00 COUNTY OF JEFFERSON
SHEET NO. R002

GENERAL NOTES

1. REPAIR BROKEN HEADER CURB ADJACENT TO PROPOSED CURB AND GUTTER. PAYMENT WILL BE THROUGH ITEMS 1875 AND 1904 WITH ENGINEER'S APPROVAL.
2. ENSURE THERE IS NO PONDING AT PROPOSED PED RAMPS.
3. THE TYPICAL SECTION IS A 40' PAVEMENT WIDTH BETWEEN THE EXISTING CURBS WITH ONE 10' LANE, ONE 2' BUFFER, AND ONE 8' WIDE PARALLEL PARKING SPACE IN EACH DIRECTION. CONSIDER THESE DIMENSIONS TO BE NOMINAL OR TYPICAL DIMENSIONS. THE ENGINEER MAY DIRECT OR APPROVE VARYING THE ACTUAL DIMENSIONS TO BE CONSTRUCTED TO FIT EXISTING CONDITIONS. DO NOT WIDEN EXISTING PAVEMENT OR SHOULDERS UNLESS SPECIFIED ELSEWHERE IN THE PLANS OR DIRECTED BY THE ENGINEER.
4. COORDINATE WITH ENGINEER BEFORE PLACING TEMPORARY MULCH AT THE CURB EXTENSIONS AND TREE WELLS AS A DIFFERENT FILL MATERIAL MAY BE SPECIFIED. INSTALL TEMPORARY MULCH APPROXIMATELY LEVEL WITH THE TOP OF SIDEWALK AND AT LEAST 2" IN DEPTH WHEN INSTALLED.
5. KEEP PROPOSED MIDBLOCK AND SIGNALIZED CROSSWALKS CLOSED PER KYTC AND MUTCD TRAFFIC CONTROL STANDARDS UNTIL DIRECTED BY KYTC TO OPEN THEM.
6. DATES THAT LANE CLOSURES ARE NOT PERMITTED INCLUDE BUT ARE NOT LIMITED TO:
BIKEAPALOOZA, INDEPENDENCE DAY WEEKEND (7/2/22-7/4/22), LABOR DAY WEEKEND (7/2/22-7/5/22), CycLOUvia (9/30/22-10/2/22), THANKSGIVING WEEKEND (11/23/22-11/27/22), CHRISTMAS WEEKEND (12/23/22-12/26/22), NEW YEARS WEEKEND (12/30/22-1/2/23), EASTER WEEKEND (4/7/23-4/9/23), THUNDER OVER LOUISVILLE (4/21/23-4/23/23), AND KENTUCKY DERBY WEEKS (4/24/23-5/7/23).
7. CONSTRUCTION HOURS AND RESTRICTIONS FOR THE PROJECT INCLUDE BUT ARE NOT LIMITED TO:
- LANE CLOSURES & MOBILE OPERATIONS ARE PERMITTED SUNDAY THROUGH THURSDAY NIGHTS FROM 8 PM - 5 AM.
- PERFORM ALL MILLING AND RESURFACING ACTIVITIES AT NIGHT. OBTAIN ENGINEER'S APPROVAL OF THE LIGHTING METHOD PRIOR TO PERFORMING NIGHT WORK.
- NON-MILLING AND RESURFACING ACTIVITIES MAY OCCUR DURING ALL DAYLIGHT HOURS IF CONTAINED WITHIN AN EXISTING PARKING LANE.
- THE ENGINEER MAY PERMIT OPERATIONS THAT CAUSE MINOR DISRUPTION TO TRAFFIC BETWEEN THE HOURS OF 9 AM TO 3 PM.
8. SEE THE TRAFFIC CONTROL PLAN DOCUMENT INCLUDED IN THE CONTRACT DOCUMENTS FOR ADDITIONAL LANE CLOSURE AND TRAFFIC CONTROL DETAILS.
9. KYTC RESURFACING PROJECT, CONTRACT 22-2080 IS ADJACENT TO THIS PROJECT. CONTRACT 22-2080 WILL START AT THE NORTHERN LIMIT AT APPROXIMATELY MILEPOINT 15.9.
LMPW HAS APPLIED FOR A PERMIT TO CONSTRUCT CURB EXTENSIONS AND PEDESTRIAN RAMP IMPROVEMENTS WITHIN THE PROJECT LIMITS. THE ANTICIPATED WORK IS SHOWN AS FOR INFORMATION ONLY WITHIN THIS PLAN SET. THE SHOWN LMPW WORK SHOULD BE COMPLETED BEFORE THIS PROJECT BEGINS CONSTRUCTION.
COORDINATION WILL BE REQUIRED BETWEEN THESE THREE PROJECTS AND MINOR, TEMPORARY STRIPING MAY NEED TO BE INSTALLED BASED ON THE SEQUENCE OF THE RESURFACING. INFORM THE ENGINEER AS SOON AS PRACTICAL OF THE ANTICIPATED RESURFACING SCHEDULE TO PREVENT ANY CONFLICTS. THE ENGINEER WILL HELP COORDINATE THE WORK OF ANY OTHER CONTRACTORS OR PERMIT HOLDERS WITHIN THE LIMITS OF THIS PROJECT. SEE SECTIONS 105.06, 107.06 AND 107.14 OF THE STANDARD SPECIFICATIONS.

SPECIAL NOTES FOR STAKING

PERFORM CONTRACTOR STAKING ACCORDING TO SECTION 201; EXCEPT, IN ADDITION TO THE REQUIREMENTS OF SECTION 201, PERFORM THE FOLLOWING:

1. CONTRARY TO SECTION 201.03.01, PERFORM ITEMS 1 & 2 USUALLY PERFORMED BY THE ENGINEER.
2. USING PAINT MARKS ON THE PAVEMENT, AND/OR ANY OTHER MEANS APPROVED BY THE ENGINEER, THE CONTRACTOR SHALL LAYOUT AND PRE-MARK THE PROPOSED STRIPING, PAVEMENT MARKINGS, ETC. ADJUST AS NECESSARY TO ACCOMMODATE THE EXISTING SITE CONDITIONS AND TO PROVIDE PROPER ALIGNMENT OF THE PROPOSED THRU AND TURNING LANES. OBTAIN APPROVAL OF THE PRE-MARKED LAYOUT FROM THE ENGINEER AND/OR DISTRICT TRAFFIC ENGINEER PRIOR TO INSTALLING THE STRIPING AND/OR PAVEMENT MARKINGS.
3. AFTER STAKING OUT THE PROPOSED WORK AND/OR LAYING OUT THE PROPOSED STRIPING, DETERMINE IF THERE ARE ANY EXISTING SIGNS THAT REQUIRE REMOVAL AND/OR RELOCATION. PROVIDE THE DISTRICT TRAFFIC ENGINEER WITH 2 WEEKS OF NOTICE WHEN A ROUTE WILL BE READY FOR A REVIEW OF THE STAKED LOCATIONS.
4. PRIOR TO INCORPORATING INTO THE WORK, OBTAIN THE ENGINEERS APPROVAL OF ALL REVISIONS DETERMINED BY THE CONTRACTOR.
5. PERFORM ANY AND ALL OTHER STAKING OPERATIONS REQUIRED TO CONTROL AND CONSTRUCT THE WORK.



Corporate Limits	---	---
County Line	---	---
Easement	---	---
Fence COA	---XX---	---XX---
Mineral Parcel	---	---
Property Line	---ℓ---	---
Right of Way Line	---	---
All Overhead Utility Lines	---	---
Electric Line Underground	---	---
Electric Line Underground Duct	====E====	====E====
Gas Main	---GM---	---GM---
Sanitary Force Main	====SAN====	====SAN====
Telephone Underground Cable	---	---
Telephone Underground Duct	====T====	====T====
Fiber Optic Cable	---	---
Television Line Underground	---	---
Water Main	---WM---	---WM---
Storm Sewer	====STORM====	====STORM====
Cable Guardrail	---	---
Ditch	---	---
Edge of Water	---	---
Fence Hedge	---	---
Fence	---X---	---X---
Flow Line/Thalweg/Int. Stream or Ditch	---	---
Guardrail	---	---
Railroad	---	---
Shrub Line	---	---
Sink Hole	---	---
Tree Line	---	---
Wall (WSM or DSM)	---	---
Blue Line Stream	---	---
Lakes and Ponds	---	---
Regulated Floodway	---	---
RDZ Line	---	---

ADA Ramp	♿	
Anchor Pole	●	
Benchmark	⊕	
Bike Lane Symbol	🚲	
Bollard	•BOLLARD	
Centerline	+	
Centerline Stationing	⊙	
Control Monument	◆	
Control Point	△	
Core Hole	◌CORE	
Crash Cushion TY 6 D	---	
Crash Cushion TY 6 A	---	
Crash Cushion TY 9A	---	
Crash Cushion TY 9	---	
Cross Notch	•NOTCH	
Curb Box Inlet	---	
Curb Notch	•NOTCH	
Combination Pole	⊕	⊕
Delineator Post	•DP	
Drop Box	---	
Existing Spring	---	
Electric Manhole	⊕	⊕
Electric Meter	◌EM	
Electric Pedestal	---	
Electric Pole	⊕	⊕
Electric Junction Box	---	
Fire Hydrant	⊕	
Flag Pole	•FP	
Force Main Sewer Valve	✂	
Fuel Tank Inlet	◌FTI	
Fuel Tank Vent	◌FTV	
Gasline Marker	◌GLM	
Gas Meter	◌GM	
Gas Monitoring Well	◌GMW	
Gas Valve	◌GV	◌GV
Gas Vent	◌GVE	
Gas Well	◌GW	
Guidewires & Anchors	---	---

Headstone	HEADSTONE	
Interstate Shield	---	
Iron Pin	•IP	
Light Pole	⊕	⊕
Low Wire	+	
Mag Nail	•MAG	
Mailbox	---	
Manhole	⊕	⊕
Mile Marker Post	•MP	
Mineral Parcel	---	
Misc Location Point	⊕	
Monitoring Well	◌MW	
Parking Meter	→PM	
Pedestrian Signal	⊕	
Pins/Pipes	•IP	
PK Nail	•PK	
Point (Misc)	---	
Pole	●	
Pole (Light)	⊕	
Post	•POST	
Power Pole	⊕	
Quarry	---	
Random (Ground Shot)	+	
Railroad Mile Marker	•RRMM	
Railroad Spike	•RRS	
Right of Way Marker	⊕	
Right of Way Monument	⊕	⊕
RR Traffic Signal Pole	⊕	
RW Parcel	---	
Sanitary Cleanout	◌SANCO	
Sanitary Manhole	⊕	⊕
Satellite Dish	⊕	
Septic Tank Cleanout	◌STC	
Service Pole	•SP	
Sewer Air Release Valve	---	
Shrub	---	---
Sign	•SIGN	
Sign Post (Single)	---	---
Sign with 2 posts	---	---

Sign group (4)	---	
Station Stamp	---	
Storm Manhole	⊕	
Stub Power	---	---
Stub Telephone	---	---
Survey Cross Notch	•CN	
Survey Curb Notch	•NOTCH	
Survey Nail	•MAG	
Survey Spike	•RRS	
Survey Stone Marker	•STONE	
Swamp	---	
Telephone Booth	---	
Telephone Junction Box	---	
Telephone Line Overhead	---	
Telephone Manhole	⊕	⊕
Telephone Pedestal	---	
Telephone Pole	---	---
Temporary Benchmark	---	
Traffic Light	---	---
Traffic Signal Control Box	---	
Traffic Signal Junction Box	---	
Traffic Signal Pole	⊕	
Traverse Point	•TRAV	
Tree	---	---
TV Junction Box	---	
Utility Pole	---	---
Underground Storage Tank	---	
Utility Test Hole	---	---
Water Line Marker	◌WLM	
Water Meter	◌WM	
Water Spigot	◌WS	
Water Valve	◌WV	◌WV
Water Well	◌WW	
Yard Light	---	
Yard Sprinkler	•YS	
Yard Sprinkler Water Valve	•SWV	

⊕	BASE MOUNTED CONTROLLER
⊕	POLE MOUNTED CONTROLLER
⊕	STEEL STRAIN POLE
●	WOOD POLE
⊕	PEDESTAL POLE
⊕	JUNCTION BOXES TYPES A, B, & C (AS DESIGNATED)
⊕	PEDESTRIAN DETECTOR
---	SIGNAL HEAD
---	PEDESTRIAN HEAD
---	SCHOOL FLASHER OR 5 SECTION
---	LOOP DETECTOR
---	1/4" SCHEDULE 80 PVC CONDUIT (UNLESS OTHERWISE NOTED)

SHADING

---	MILLING AND RESURFACING
---	SIDEWALK/ASPHALT REMOVAL FOR TREE WELLS
---	PROPOSED SIDEWALK
---	TEMPORARY MULCH (OR OTHER FILL PER ENGINEER'S DIRECTION)

UTILITY OWNERS

CABLE:

CHARTER COMMUNICATIONS
10168 LINN STATION ROAD, SUITE 120
LOUISVILLE, KY 40223
CONTACT: MICHAEL YORK
CELL: 502-548-1632
EMAIL: MICHAEL.YORK@CHARTER.COM

GAS:

LG&E
820 WEST BROADWAY
LOUISVILLE, KY 40202
GAS EMERGENCY NUMBER: 502-589-5511
LG&E AND KU EMERGENCY NUMBER: 1-800-331-7370
CONTACT: CAROLINE JUSTICE
OFFICE: 502-627-3708
EMAIL: CAROLINE.JUSTICE@LGE-KU.COM

TELEPHONE:

VERIZON
2421 HOLLOWAY ROAD
LOUISVILLE, KY 40299
CONTACT: RONNIE KUERZI
CELL: 502-780-2748
EMAIL: RONALD.KUERZI@VERIZON.COM

ELECTRIC:

LG&E KU
820 WEST BROADWAY
LOUISVILLE, KY 40202
LG&E EMERGENCY NUMBER: 502-589-5511
LG&E AND KU EMERGENCY NUMBER: 1-800-331-7370
CONTACT: CAROLINE JUSTICE
OFFICE: 502-627-3708
EMAIL: CAROLINE.JUSTICE@LGE-KU.COM

SEWER:

METROPOLITAN SEWER DISTRICT
700 WEST LIBERTY STREET
LOUISVILLE, KY 40203-1911
CONTACT: BRANDON FLAHERTY
OFFICE: 502-540-6632
CELL: 502-381-0804
EMAIL: BRANDON.FLAHERTY@LOUISVILLEMSD.ORG

WATER:

LOUISVILLE WATER COMPANY
550 SOUTH THIRD STREET
LOUISVILLE, KY 40202
CONTACT: PAT HOWARD, PE
OFFICE: 502-569-3615
CELL: 502-287-7568
EMAIL: PHOWARD@LWCKY.COM

FIBER OPTIC:

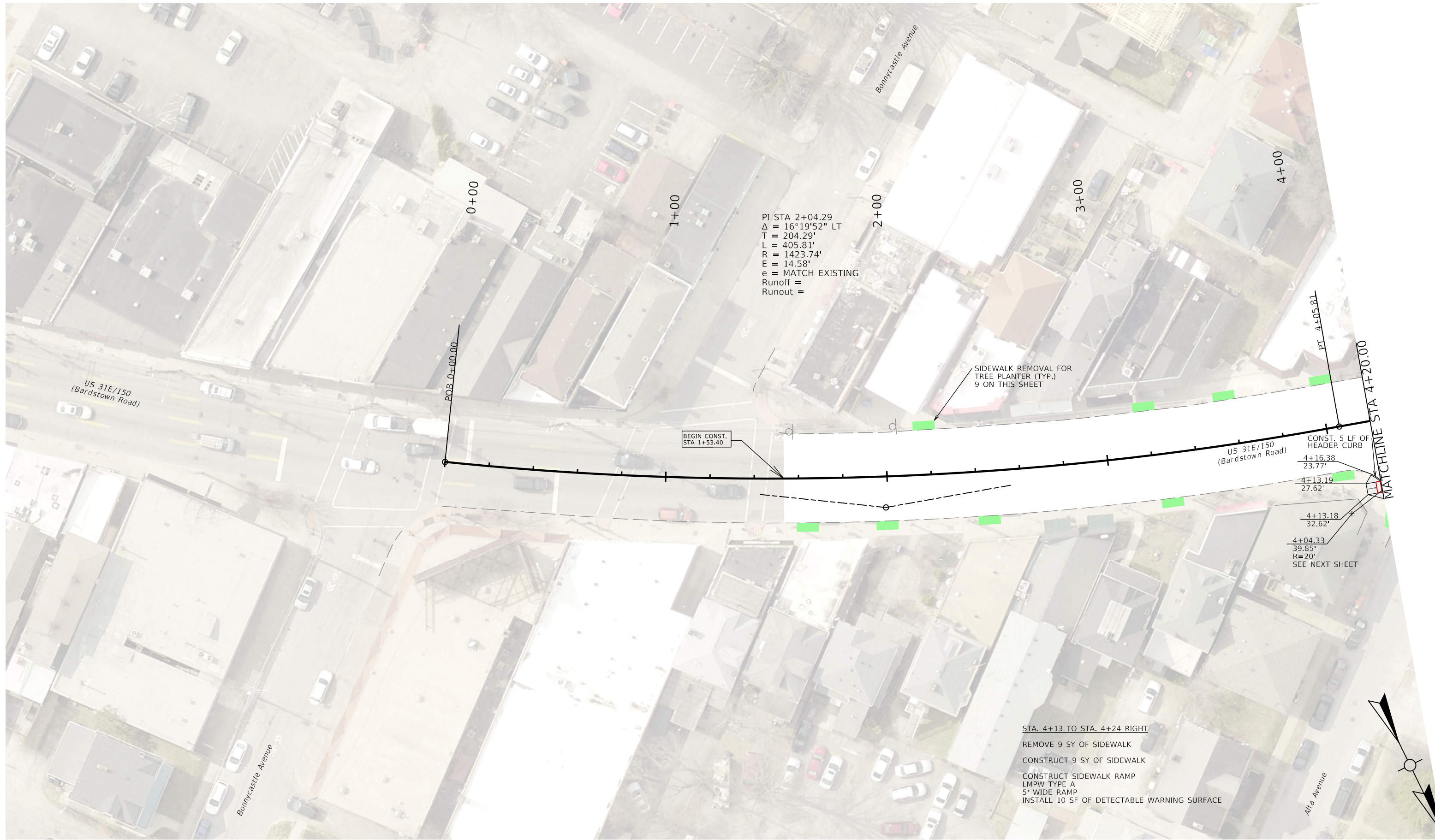
AT&T LEGACY
7555 EAST PLEASANT VALLEY ROAD, SUITE 140
INDEPENDENCE, OH 44131
CONTACT: DON GARR
CELL: 502-741-8374
EMAIL: DONGARR@OUTLOOK.COM

CROWN CASTLE FIBER
3310 RUCKREIGEL PARKWAY
JEFFERSONTOWN, KY 40299
CONTACT: LISA CLARK
CELL: 810-223-3780
EMAIL: LISA.CLARK@CROWNCastle.COM

LUMEN TECHNOLOGIES
11857 COMMONWEALTH DRIVE
LOUISVILLE, KY 40299
CONTACT: TIM SEWELL
EMAIL: TIM.SEWELL@LUMEN.COM
OFFICE: 502-389-4812
CELL: 502-295-0940
CONTACT: RICHARD COMPTON
EMAIL: RICHARD.COMPTON@LUMEN.COM

WINDSTREAM
111 SOUTH MAIN STREET
ELIZABETHTOWN, KY 42701
CONTACT: JAMES GALVIN
OFFICE: 270-748-9249
EMAIL: JAMES.GALVIN@WINDSTREAM.COM





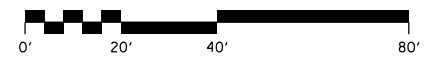
PI STA 2+04.29
 $\Delta = 16^{\circ}19'52''$ LT
 T = 204.29'
 L = 405.81'
 R = 1423.74'
 E = 14.58'
 e = MATCH EXISTING
 Runoff =
 Runout =

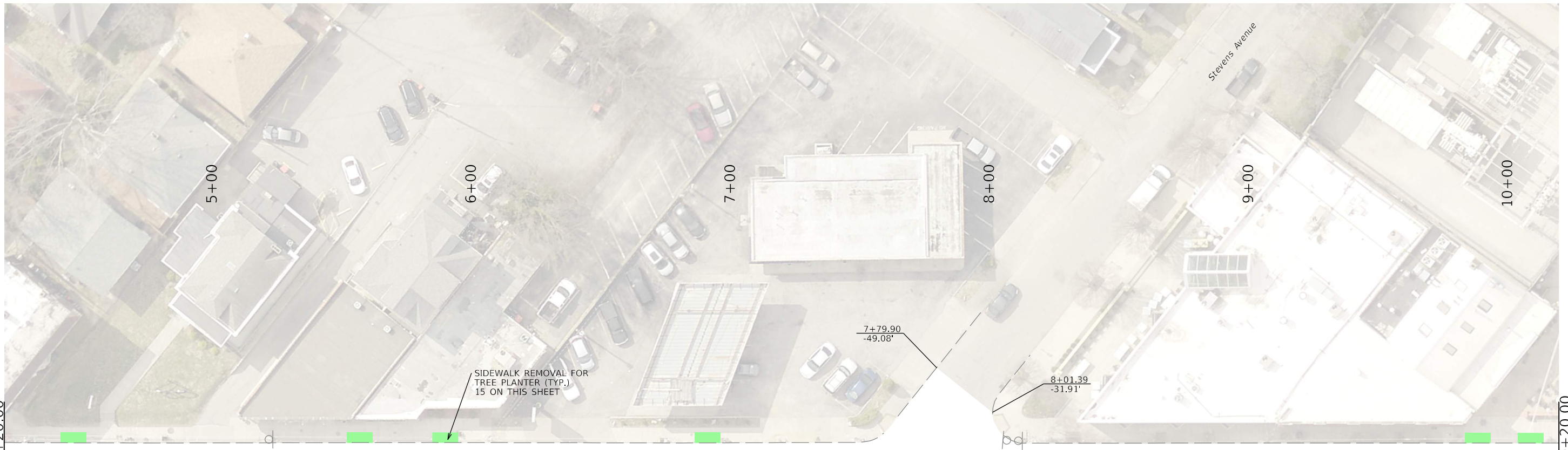
SIDWALK REMOVAL FOR TREE PLANTER (TYP.) 9 ON THIS SHEET

BEGIN CONST. STA 1+53.40

CONST. 5 LF OF HEADER CURB
 4+16.38 23.77'
 4+13.19 27.62'
 4+13.18 32.62'
 4+04.33 39.85'
 R=20'
 SEE NEXT SHEET

STA. 4+13 TO STA. 4+24 RIGHT
 REMOVE 9 SY OF SIDWALK
 CONSTRUCT 9 SY OF SIDWALK
 CONSTRUCT SIDWALK RAMP
 LMPW TYPE A
 5' WIDE RAMP
 INSTALL 10 SF OF DETECTABLE WARNING SURFACE





MATCHLINE STA 4+20.00

MATCHLINE STA 10+20.00

N74°03'11"W

N74°03'11"W

US 31E/150
(Bardstown Road)

US 31E/150
(Bardstown Road)

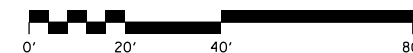


COMMONWEALTH OF KENTUCKY
DEPARTMENT OF HIGHWAYS



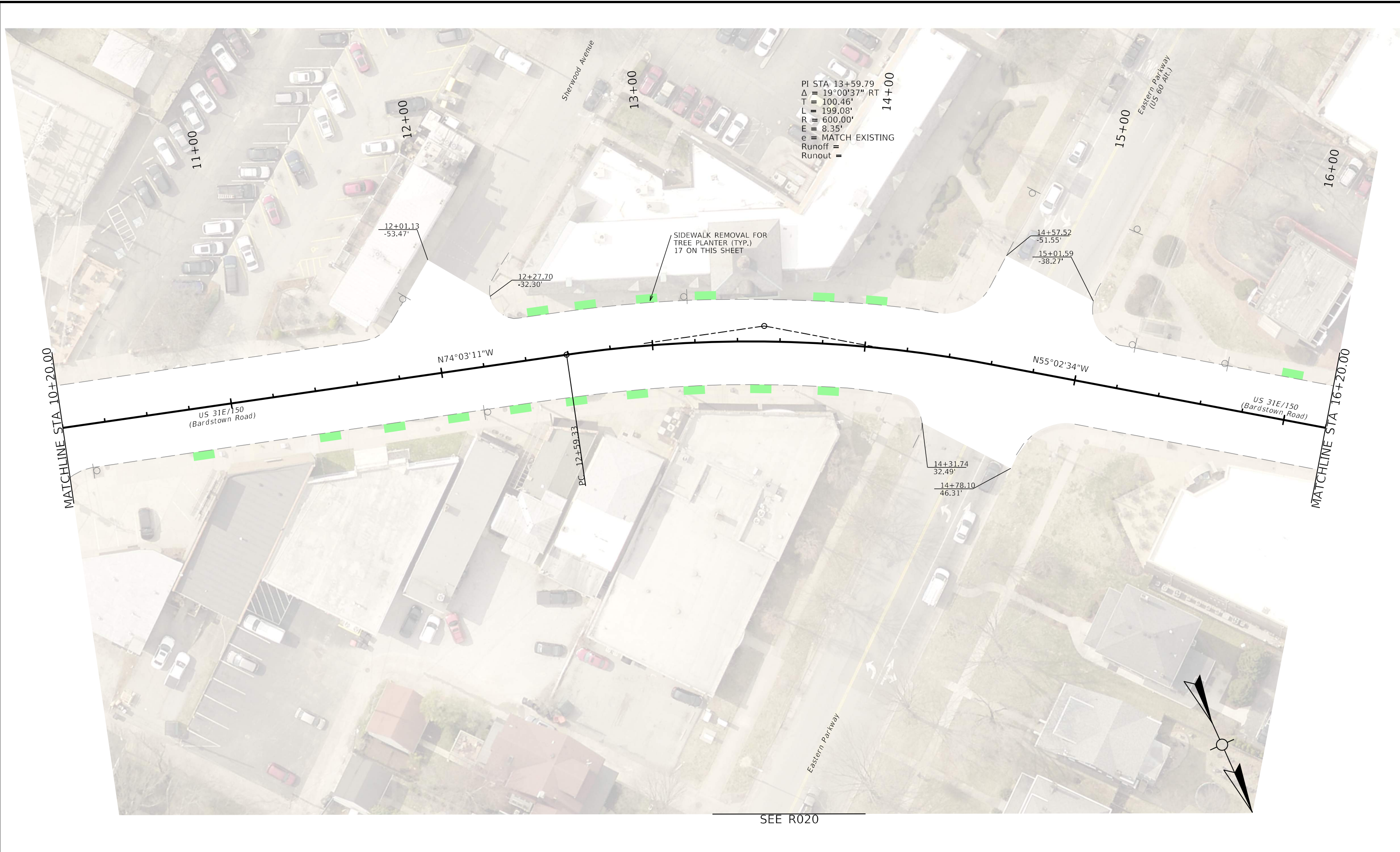
PLAN SHEET

HORIZONTAL SCALE
SCALE: 1" = 20'



STA. 4+20 TO STA. 10+20

ITEM NO.	COUNTY OF
05-09030.00	JEFFERSON
SHEET NO.	
R007	



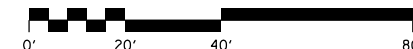
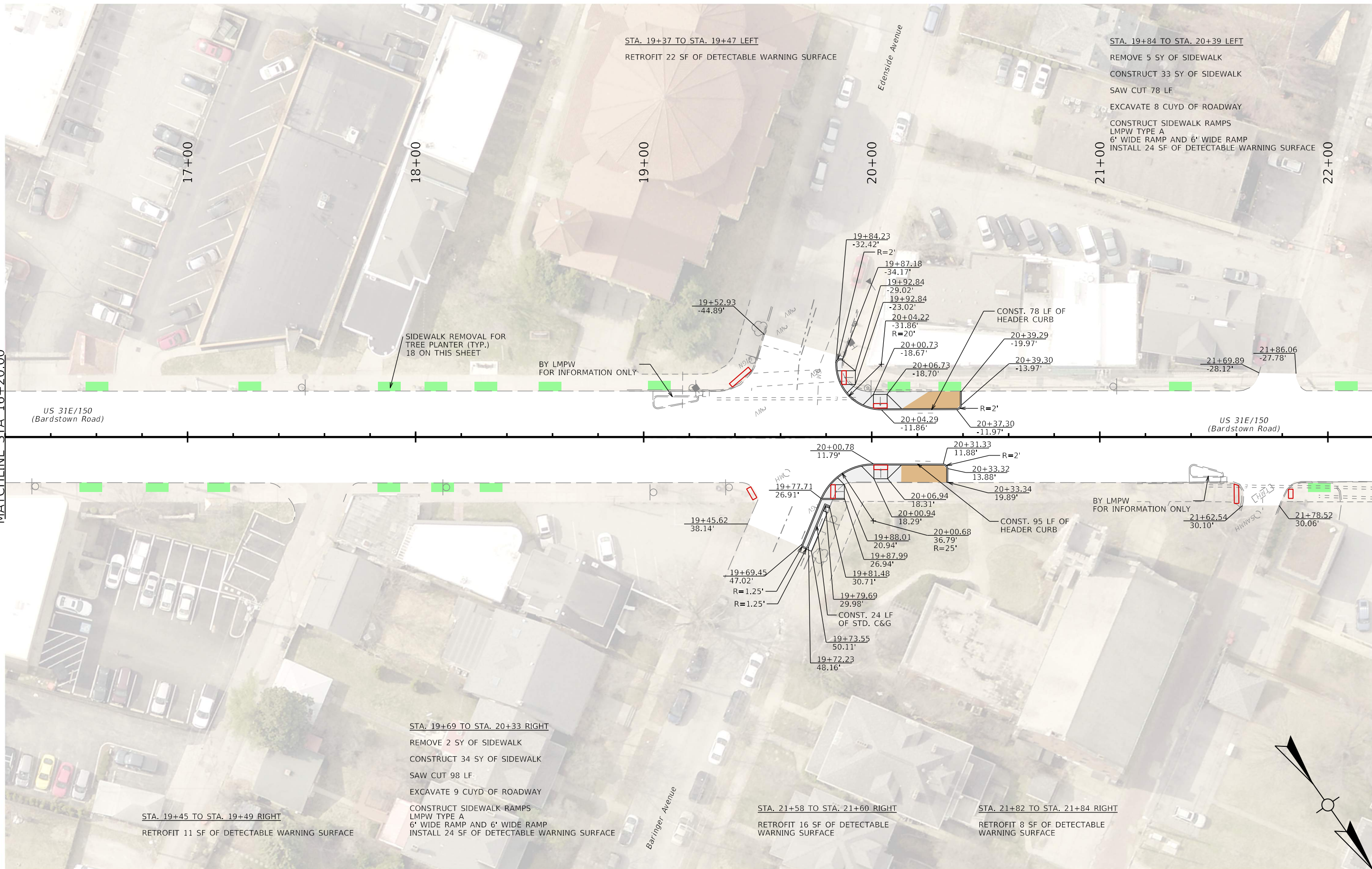
PI STA 13+59.79
 $\Delta = 19^{\circ}00'37''$ RT
 $T = 100.46'$
 $L = 199.08'$
 $R = 600.00'$
 $E = 8.35'$
 $e = \text{MATCH EXISTING}$
 Runoff =
 Runout =

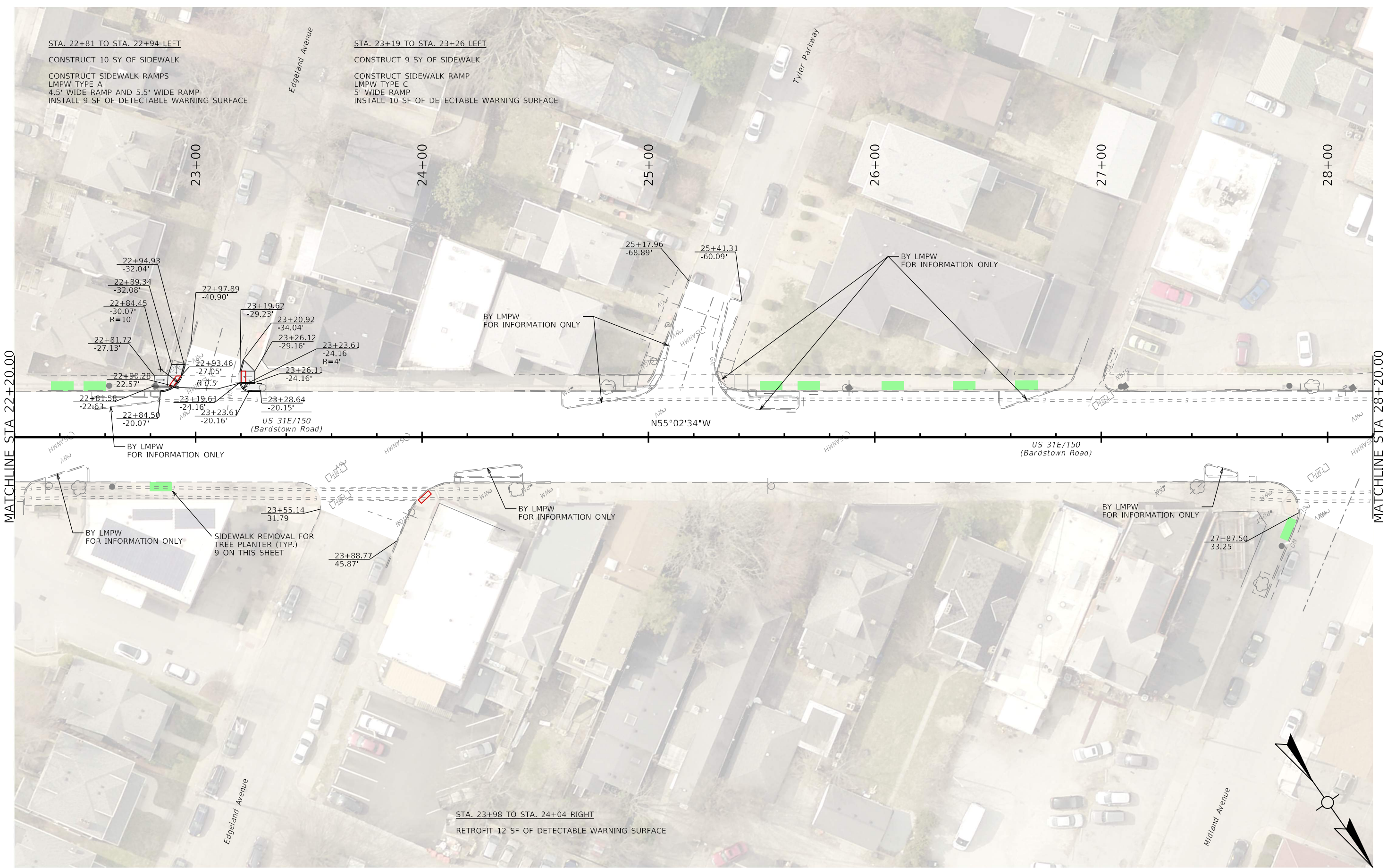
SIDEWALK REMOVAL FOR
 TREE PLANTER (TYP.)
 17 ON THIS SHEET

MATCHLINE STA 10+20.00

MATCHLINE STA 16+20.00

SEE R020





STA. 22+81 TO STA. 22+94 LEFT
 CONSTRUCT 10 SY OF SIDEWALK
 CONSTRUCT SIDEWALK RAMP
 LMPW TYPE A
 4.5' WIDE RAMP AND 5.5' WIDE RAMP
 INSTALL 9 SF OF DETECTABLE WARNING SURFACE

STA. 23+19 TO STA. 23+26 LEFT
 CONSTRUCT 9 SY OF SIDEWALK
 CONSTRUCT SIDEWALK RAMP
 LMPW TYPE C
 5' WIDE RAMP
 INSTALL 10 SF OF DETECTABLE WARNING SURFACE

BY LMPW FOR INFORMATION ONLY

BY LMPW FOR INFORMATION ONLY

22+94.93
-32.04'
 22+89.34
-32.08'
 22+84.45
-30.07'
R=10'
 22+81.72
-27.13'
 22+90.28
-22.57'
 22+81.58
-22.63'
 22+84.50
-20.07'
 22+93.46
-27.05'
 22+97.89
-40.90'
 23+19.62
-29.23'
 23+20.92
-34.04'
 23+26.12
-29.16'
 23+23.61
-24.16'
 R=4'
 23+26.11
-24.16'
 23+28.64
-20.15'
 23+23.61
-20.16'
 US 31E/150
(Bardstown Road)

25+17.96
-68.89'
 25+41.31
-60.09'

N55°02'34"W

US 31E/150
(Bardstown Road)

23+55.14
31.79'
 23+88.77
45.87'

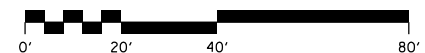
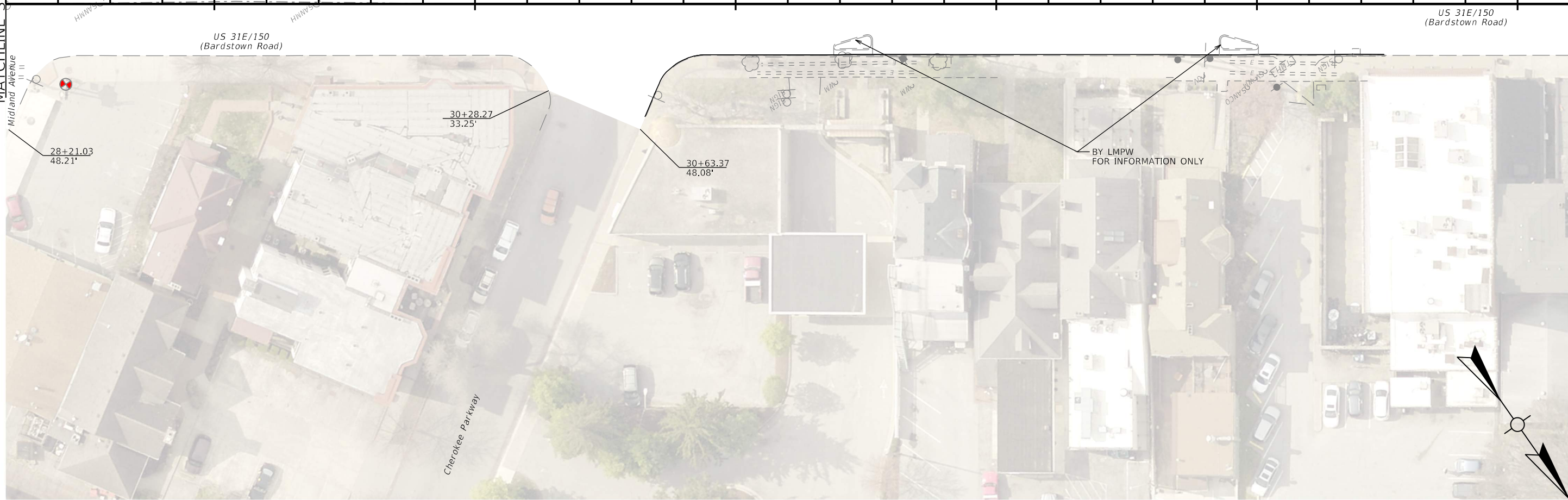
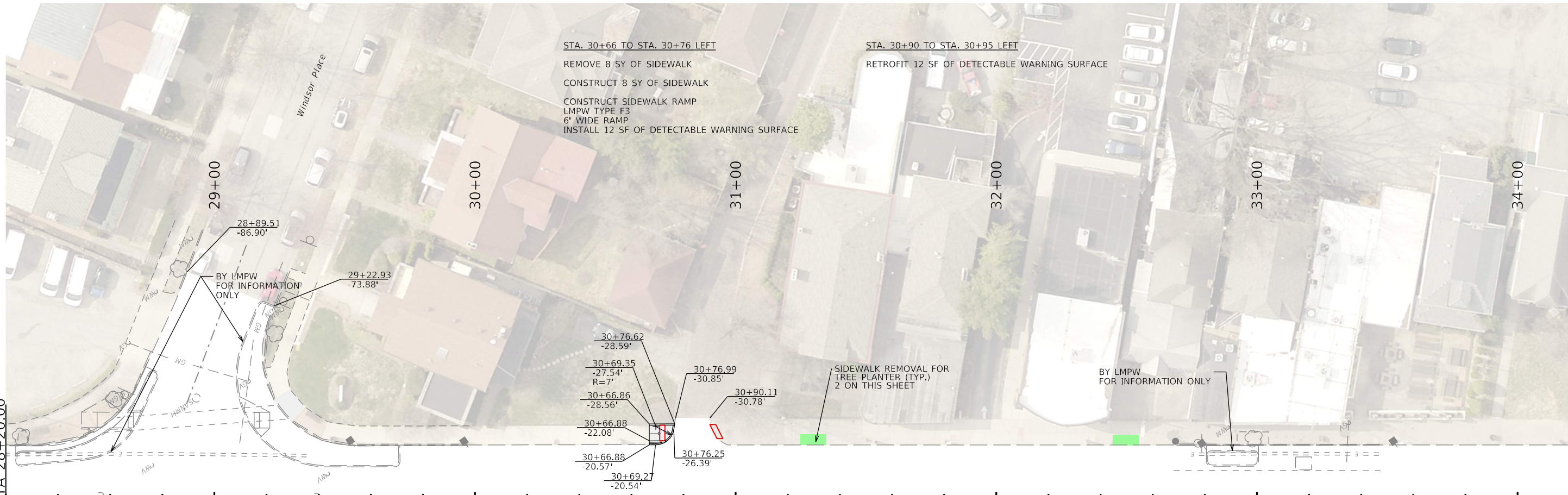
SIDEWALK REMOVAL FOR TREE PLANTER (TYP.)
 9 ON THIS SHEET

27+87.50
33.25'

STA. 23+98 TO STA. 24+04 RIGHT
 RETROFIT 12 SF OF DETECTABLE WARNING SURFACE

MATCHLINE STA 22+20.00

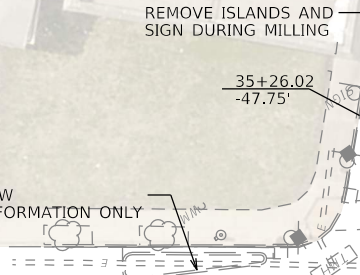
MATCHLINE STA 28+20.00



NOTES
 1. REMOVE INLET HOOD AND BUILD UP ABOVE THE CHAMBER WITH 8" THICK CONCRETE REINFORCED WITH #4 BARS AT 6" SPACING.
 2. PLACE THE CURBS NEAREST TO THE SIGNAL POLE SO THAT THE TRAFFIC CONTROLLER DOES NOT OBSTRUCT THE RAMPS. DESIGNERS USED 20:1 SLOPES TO MAINTAIN A MINIMUM 5' LANDING WIDTH.

STA. 35+82 TO STA. 35+97 LEFT
 REMOVE 8 SY OF SIDEWALK
 CONSTRUCT 8 SY OF SIDEWALK
 CONSTRUCT SIDEWALK RAMPS
 LMPW TYPE A
 6' WIDE RAMP
 INSTALL 12 SF OF DETECTABLE WARNING SURFACE

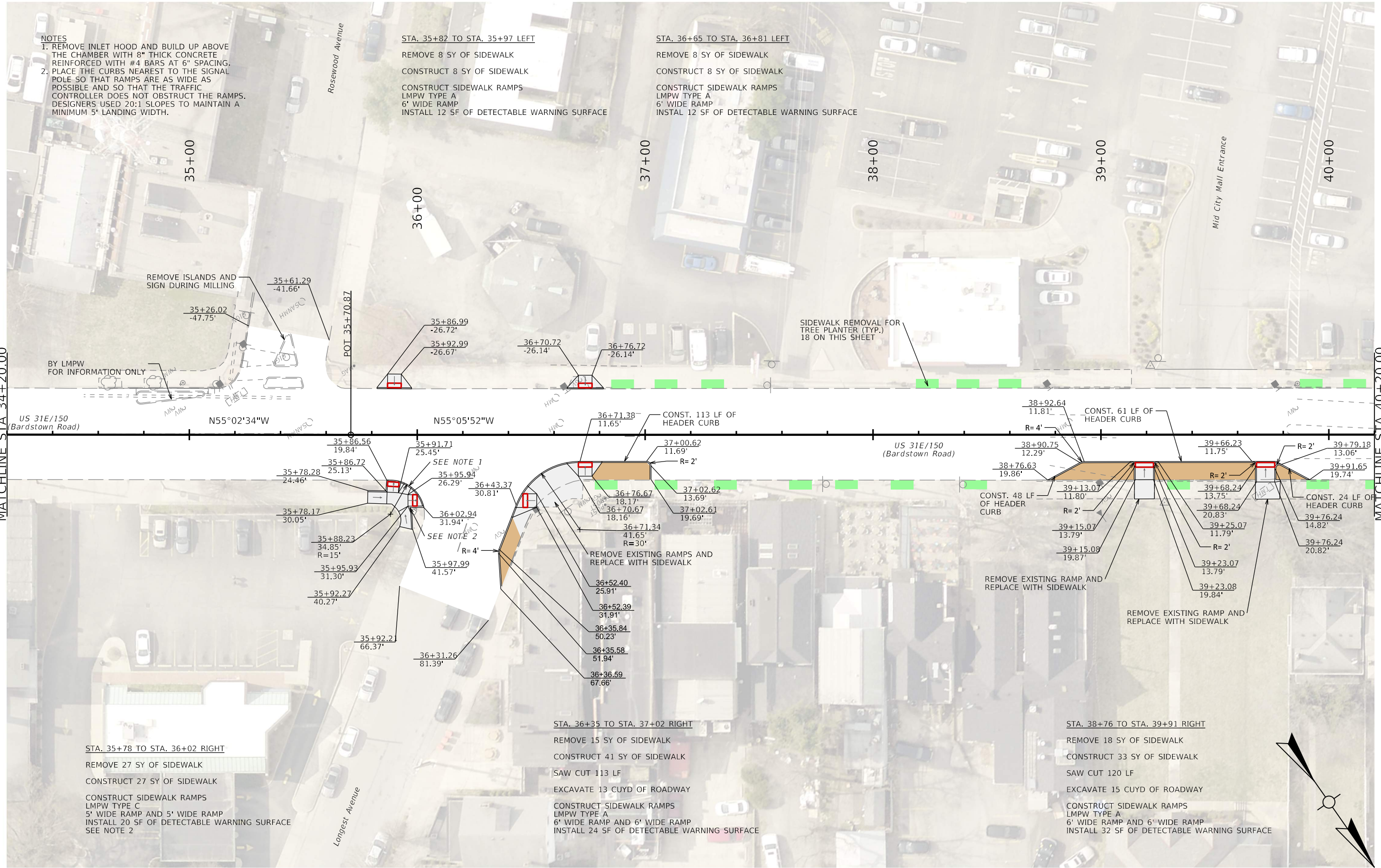
STA. 36+65 TO STA. 36+81 LEFT
 REMOVE 8 SY OF SIDEWALK
 CONSTRUCT 8 SY OF SIDEWALK
 CONSTRUCT SIDEWALK RAMPS
 LMPW TYPE A
 6' WIDE RAMP
 INSTALL 12 SF OF DETECTABLE WARNING SURFACE



SIDEWALK REMOVAL FOR TREE PLANTER (TYP.) 18 ON THIS SHEET

MATCHLINE STA 34+20.00

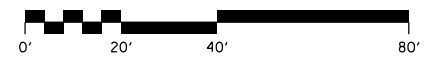
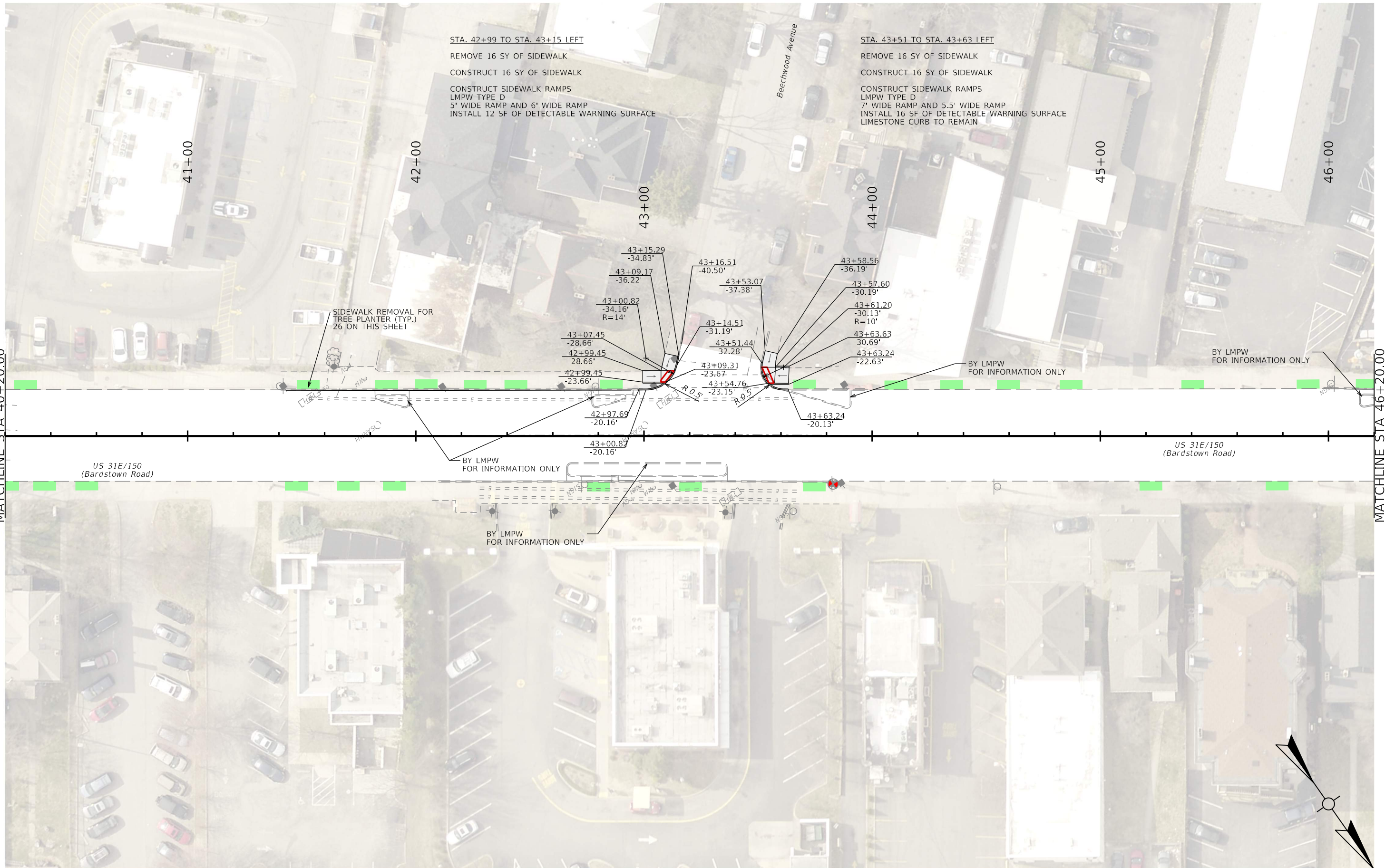
MATCHLINE STA 40+20.00



STA. 35+78 TO STA. 36+02 RIGHT
 REMOVE 27 SY OF SIDEWALK
 CONSTRUCT 27 SY OF SIDEWALK
 CONSTRUCT SIDEWALK RAMPS
 LMPW TYPE C
 5' WIDE RAMP AND 5' WIDE RAMP
 INSTALL 20 SF OF DETECTABLE WARNING SURFACE
 SEE NOTE 2

STA. 36+35 TO STA. 37+02 RIGHT
 REMOVE 15 SY OF SIDEWALK
 CONSTRUCT 41 SY OF SIDEWALK
 SAW CUT 113 LF
 EXCAVATE 13 CU YD OF ROADWAY
 CONSTRUCT SIDEWALK RAMPS
 LMPW TYPE A
 6' WIDE RAMP AND 6' WIDE RAMP
 INSTALL 24 SF OF DETECTABLE WARNING SURFACE

STA. 38+76 TO STA. 39+91 RIGHT
 REMOVE 18 SY OF SIDEWALK
 CONSTRUCT 33 SY OF SIDEWALK
 SAW CUT 120 LF
 EXCAVATE 15 CU YD OF ROADWAY
 CONSTRUCT SIDEWALK RAMPS
 LMPW TYPE A
 6' WIDE RAMP AND 6' WIDE RAMP
 INSTALL 32 SF OF DETECTABLE WARNING SURFACE



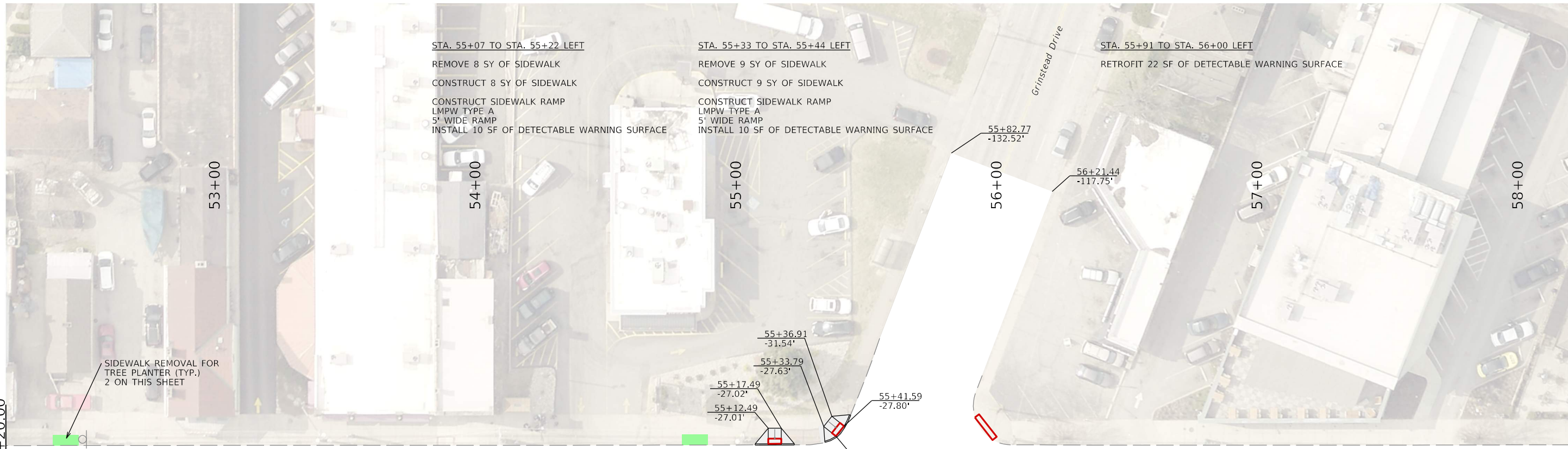


STA. 46+90 TO STA. 47+51 LEFT
 REMOVE 6 SY OF SIDEWALK
 CONSTRUCT 20 SY OF SIDEWALK
 SAW CUT 86 LF
 EXCAVATE 9 CU YD OF ROADWAY
 CONSTRUCT SIDEWALK RAMPS
 LMPW TYPE A
 6' WIDE RAMP AND 6' WIDE RAMP
 INSTALL 24 SF OF DETECTABLE WARNING SURFACE

STA. 51+06 TO STA. 51+19 LEFT
 REMOVE 12 SY OF SIDEWALK
 CONSTRUCT 12 SY OF SIDEWALK
 CONSTRUCT SIDEWALK RAMP
 LMPW TYPE A
 7' WIDE RAMP
 INSTALL 14 SF OF DETECTABLE WARNING SURFACE

STA. 51+58 TO STA. 51+70 LEFT
 REMOVE 20 SY OF SIDEWALK
 CONSTRUCT 20 SY OF SIDEWALK
 CONSTRUCT SIDEWALK RAMPS
 LMPW TYPE D
 BLEND 6' WIDE AND 8' WIDE RAMPS TOGETHER
 INSTALL 13 SF OF DETECTABLE WARNING SURFACE

STA. 42+53 TO STA. 47+06 RIGHT
 REMOVE 9 SY OF SIDEWALK
 CONSTRUCT 14 SY OF 8" SIDEWALK
 SAW CUT 60 LF
 EXCAVATE 6 CU YD OF ROADWAY
 CONSTRUCT SIDEWALK RAMP
 LMPW TYPE A
 6' WIDE RAMP USING 8" SIDEWALK
 INSTALL 12 SF OF DETECTABLE WARNING SURFACE

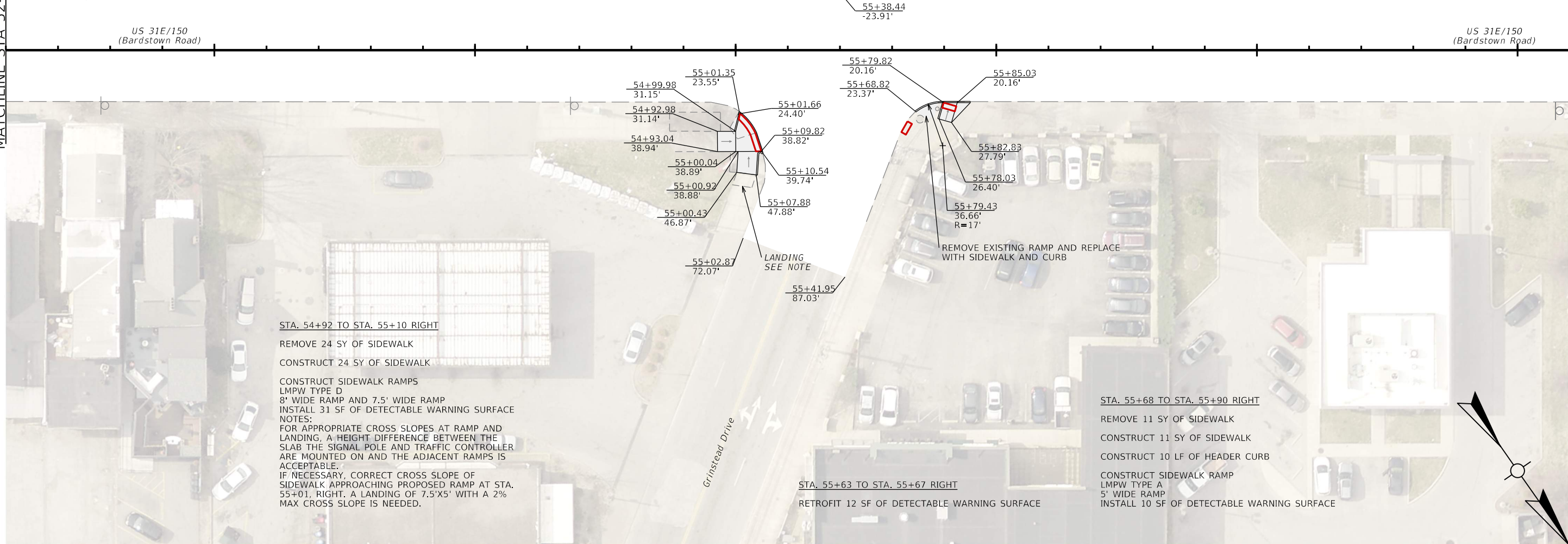


US 31E/150
(Bardstown Road)

US 31E/150
(Bardstown Road)

MATCHLINE STA 52+20.00

MATCHLINE STA 58+20.00

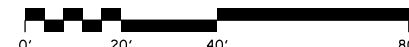


COMMONWEALTH OF KENTUCKY
DEPARTMENT OF HIGHWAYS



PLAN SHEET

HORIZONTAL SCALE
SCALE: 1" = 20'



STA. 52+20 TO STA. 58+20

ITEM NO. 05-09030.00 COUNTY OF JEFFERSON
SHEET NO. R015



MATCHLINE STA 58+20.00

MATCHLINE STA 64+20.00

US 31E/150
(Bardstown Road)

US 31E/150
(Bardstown Road)

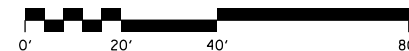


COMMONWEALTH OF KENTUCKY
DEPARTMENT OF HIGHWAYS



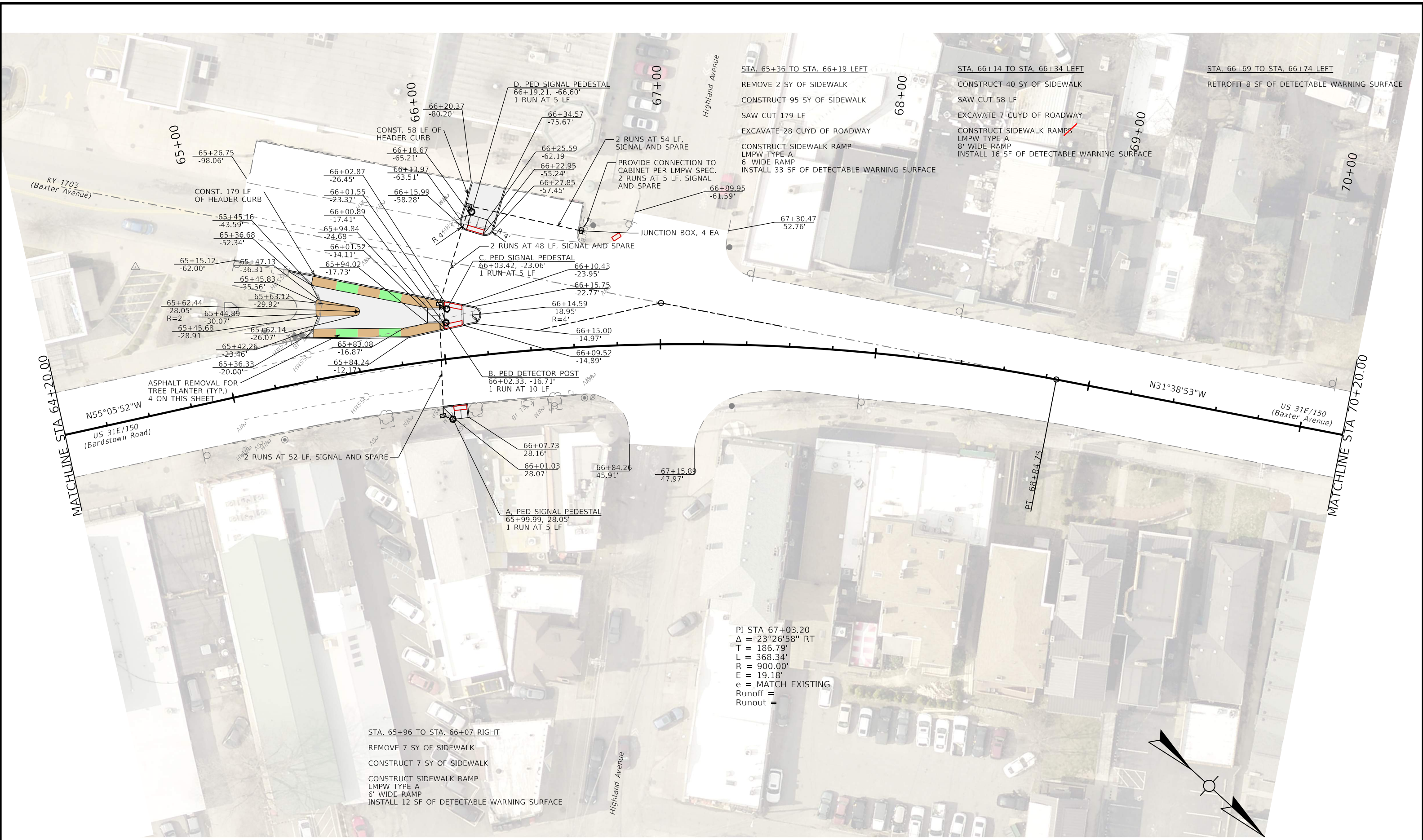
PLAN SHEET

HORIZONTAL SCALE
SCALE: 1" = 20'



STA. 58+20 TO STA. 64+20

ITEM NO. 05-09030.00 COUNTY OF JEFFERSON
SHEET NO. R016



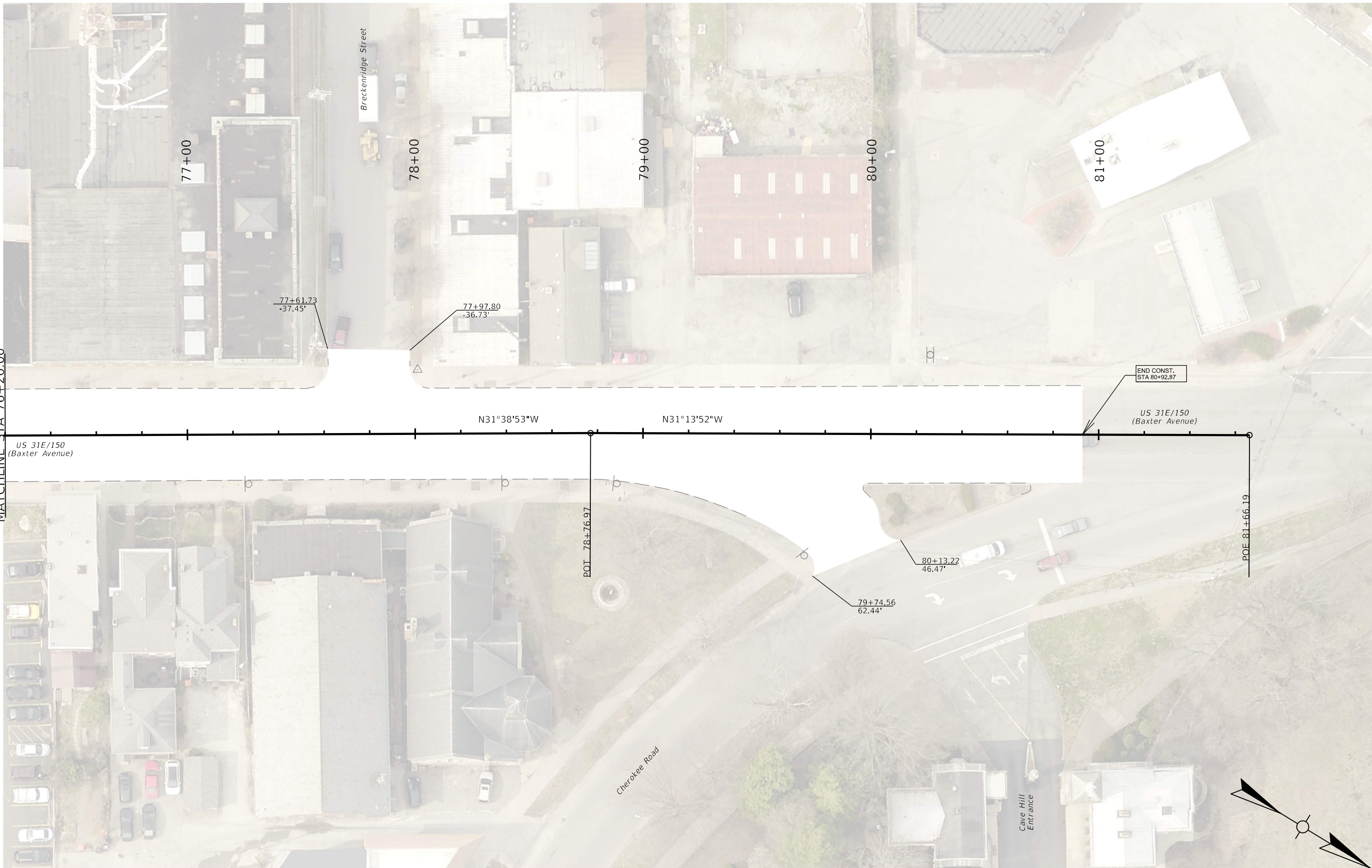
PI STA 67+03.20
 $\Delta = 23^{\circ}26'58''$ RT
 $T = 186.79'$
 $L = 368.34'$
 $R = 900.00'$
 $E = 19.18'$
 $e =$ MATCH EXISTING
 Runoff =
 Runout =

STA. 65+96 TO STA. 66+07 RIGHT
 REMOVE 7 SY OF SIDEWALK
 CONSTRUCT 7 SY OF SIDEWALK
 CONSTRUCT SIDEWALK RAMP
 LMPW TYPE A
 6' WIDE RAMP
 INSTALL 12 SF OF DETECTABLE WARNING SURFACE

STA. 65+36 TO STA. 66+19 LEFT
 REMOVE 2 SY OF SIDEWALK
 CONSTRUCT 95 SY OF SIDEWALK
 SAW CUT 179 LF
 EXCAVATE 28 CU YD OF ROADWAY
 CONSTRUCT SIDEWALK RAMP
 LMPW TYPE A
 6' WIDE RAMP
 INSTALL 33 SF OF DETECTABLE WARNING SURFACE

STA. 66+14 TO STA. 66+34 LEFT
 CONSTRUCT 40 SY OF SIDEWALK
 SAW CUT 58 LF
 EXCAVATE 7 CU YD OF ROADWAY
 CONSTRUCT SIDEWALK RAMP
 LMPW TYPE A
 8' WIDE RAMP
 INSTALL 16 SF OF DETECTABLE WARNING SURFACE

STA. 66+69 TO STA. 66+74 LEFT
 RETROFIT 8 SF OF DETECTABLE WARNING SURFACE



MATCHLINE STA 76+20.00

US 31E/150
(Baxter Avenue)

Breckenridge Street

77+00

78+00

79+00

80+00

81+00

77+61.73
-37.45'

77+97.80
-36.73'

END CONST.
STA 80+92.87

US 31E/150
(Baxter Avenue)

N31°38'53"W

N31°13'52"W

POT 78+76.97

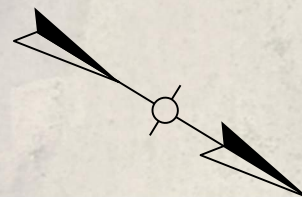
80+13.22
46.47'

79+74.56
62.44'

POE 81+66.19

Cherokee Road

Cave Hill
Entrance

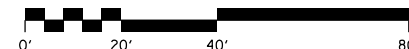


COMMONWEALTH OF KENTUCKY
DEPARTMENT OF HIGHWAYS



PLAN SHEET

HORIZONTAL SCALE
SCALE: 1" = 20'

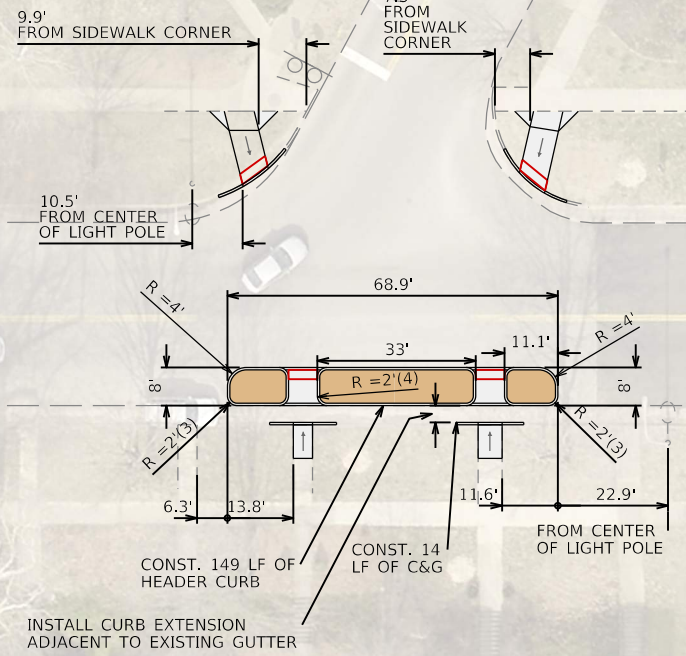
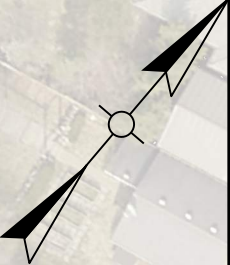


STA. 76+20 TO STA. 81+67

ITEM NO. 05-09030.00 COUNTY OF JEFFERSON
SHEET NO. R019

NORTHWEST CORNER
 CONSTRUCT 11 SY OF SIDEWALK
 SAW CUT 18 LF
 CONSTRUCT SIDEWALK RAMP
 LMPW TYPE F2
 6' WIDE RAMP
 INSTALL 13 SF OF DETECTABLE WARNING SURFACE
 18 LF CURB REMOVED

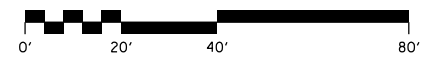
NORTHEAST CORNER
 CONSTRUCT 12 SY OF SIDEWALK
 SAW CUT 17 LF
 CONSTRUCT SIDEWALK RAMP
 LMPW TYPE F2
 6' WIDE RAMP
 INSTALL 12 SF OF DETECTABLE WARNING SURFACE

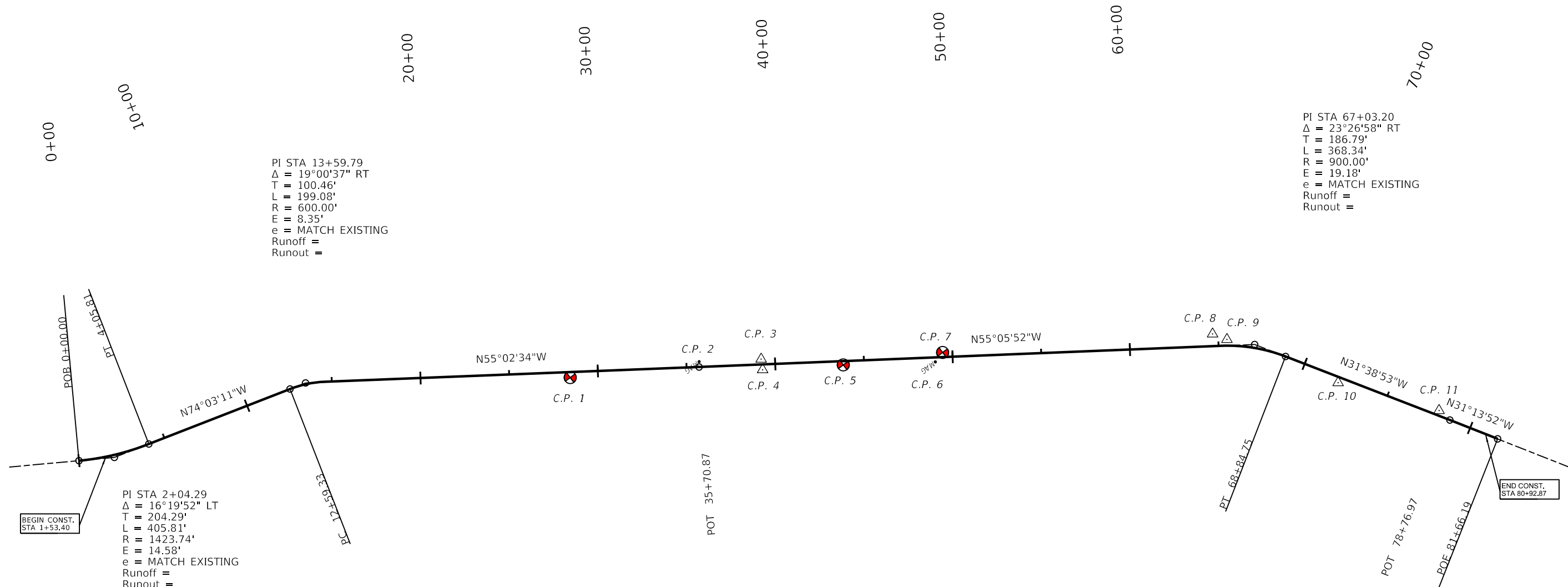


INSTALL CURB EXTENSION
 ADJACENT TO EXISTING GUTTER

SOUTH SIDE
 REMOVE 6 SY OF SIDEWALK
 CONSTRUCT 20 SY OF SIDEWALK
 SAW CUT 149 LF
 EXCAVATE 10 CUYD OF ROADWAY
 CONSTRUCT SIDEWALK RAMP
 LMPW TYPE A
 6' WIDE RAMP AND 6' WIDE RAMP
 INSTALL 24 SF OF DETECTABLE WARNING SURFACE

SEE R008





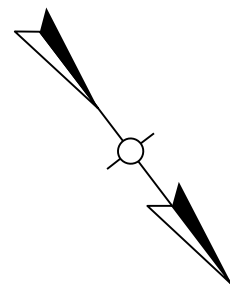
PI STA 67+03.20
 $\Delta = 23^\circ 26' 58''$ RT
 T = 186.79'
 L = 368.34'
 R = 900.00'
 E = 19.18'
 e = MATCH EXISTING
 Runoff =
 Runout =

PI STA 13+59.79
 $\Delta = 19^\circ 00' 37''$ RT
 T = 100.46'
 L = 199.08'
 R = 600.00'
 E = 8.35'
 e = MATCH EXISTING
 Runoff =
 Runout =

PI STA 2+04.29
 $\Delta = 16^\circ 19' 52''$ LT
 T = 204.29'
 L = 405.81'
 R = 1423.74'
 E = 14.58'
 e = MATCH EXISTING
 Runoff =
 Runout =

CONTROL LINE DATA										
BEARING	DISTANCE	NORTHING (Y)	EASTING (X)							
				PC	PI	PT	DELTA	R	L	T
N74.359°W	1057.811	3971790.407	4934136.231	0+00.0		4+05.8	16.331°	-1423.739	405.808	204.289
N55.043°W	2212.923	3972107.59	4933022.236	12+59.3		14+58.4	19.010°	600.000	199.076	100.461
N55.098°W	2945.541	3973375.519	4931208.57		35+70.9					
N31.648°W	1179.002	3975167.77	4928639.657	65+16.4		68+84.8	23.450°	900.000	368.345	186.787
N31.231°W	289.226	3976171.438	4928021.032		78+77.0					
		3976418.75	4927871.071		81+66.2					

CONTROL POINTS							
CP NUMBER	TYPE	NORTHING (Y)	EASTING (X)	ELEVATION (Z)	STATION	OFFSET	DESCRIPTION
1	BENCHMARK	3972983.740	4931822.793	534.770	28+42.99	30.83' RT	ON SOUTHERNMOST BOLT ON BASE OF PRIVATE SIGN FOR HIGHLAND MART AT THE NORTHERN CORNER OF THE INTERSECTION OF BARDSTOWN ROAD AND MIDLAND AVENUE. MARKED WITH PINK PAINT.
2	MAG NAIL	3973351.500	4931190.113	529.220	35+72.26	30.26' LT	MAG NAIL WITH WASHER MARKED "SMUFF PLS 3417" FOUND ALONG THE SOUTH SIDE OF BARDSTOWN ROAD IN BRICK SIDEWALK AT THE EASTERN CORNER OF THE INTERSECTION OF BARDSTOWN ROAD AND ROSEWOOD AVENUE.
3	CONTROL POINT	3973551.412	493090.610	524.830	39+21.62	30.24' LT	-
4	CONTROL POINT	3973604.259	4930932.810	525.219	39+27.91	29.81' RT	-
5	BENCHMARK	3973857.410	4930554.659	520.160	43+82.89	21.06' RT	ON WESTERNMOST BOLT ON BASE OF SIGNAL POLE ON NORTH SIDE OF BARDSTOWN ROAD JUST WEST OF MCDONALD'S, ACROSS THE STREET FROM BEECHWOOD AVENUE. MARKED WITH PINK PAINT.
6	MAG NAIL	3974157.621	4930131.402	513.386	49+01.79	25.09' RT	-
7	BENCHMARK	3974140.235	4930066.566	513.940	49+45.01	26.26' LT	ON NORTHERN MOST BOLT ON BASE OF SIGNAL POLE ON SOUTH SIDE OF BARDSTOWN ROAD ACROSS FROM PATTERSON AVE. MARKED WITH WHITE PAINT.
8	CONTROL POINT	3974977.014	4928792.489	496.510	64+68.71	69' LT	-
9	CONTROL POINT	3975050.644	4928747.043	496.162	65+46.92	35.15' LT	-
10	CONTROL POINT	3975623.242	4928395.217	489.247	72+13.96	30.9' RT	-
11	CONTROL POINT	3976092.124	4928036.812	487.313	78+01.17	28.18' LT	-



COMMONWEALTH OF KENTUCKY
 DEPARTMENT OF HIGHWAYS

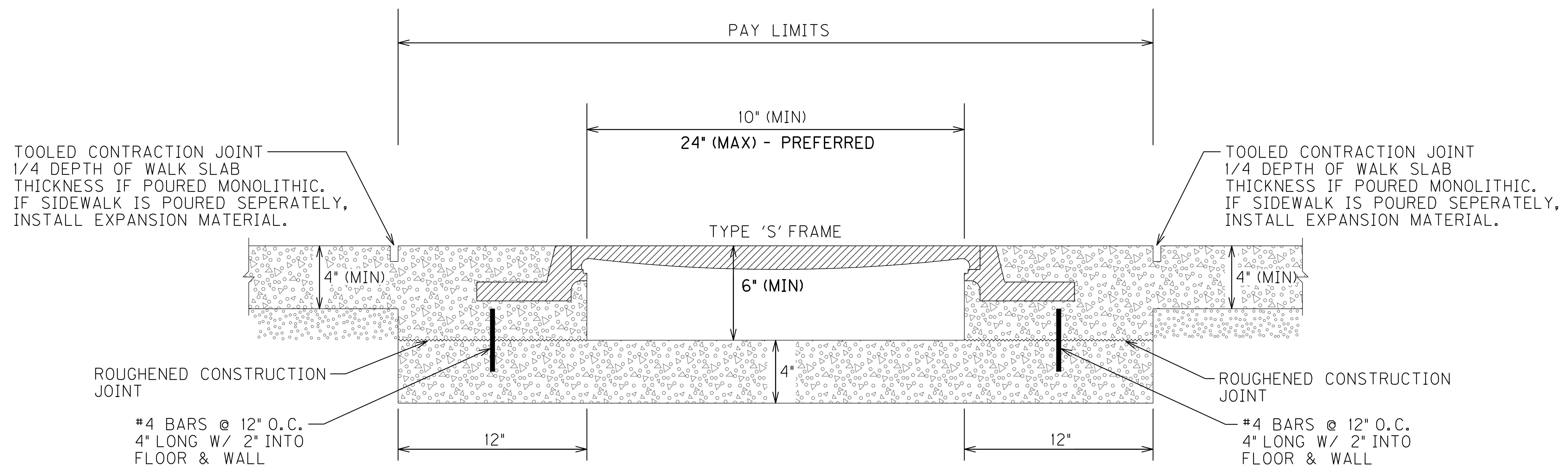


COORDINATE CONTROL

HORIZONTAL SCALE
 SCALE: 1" = 300'



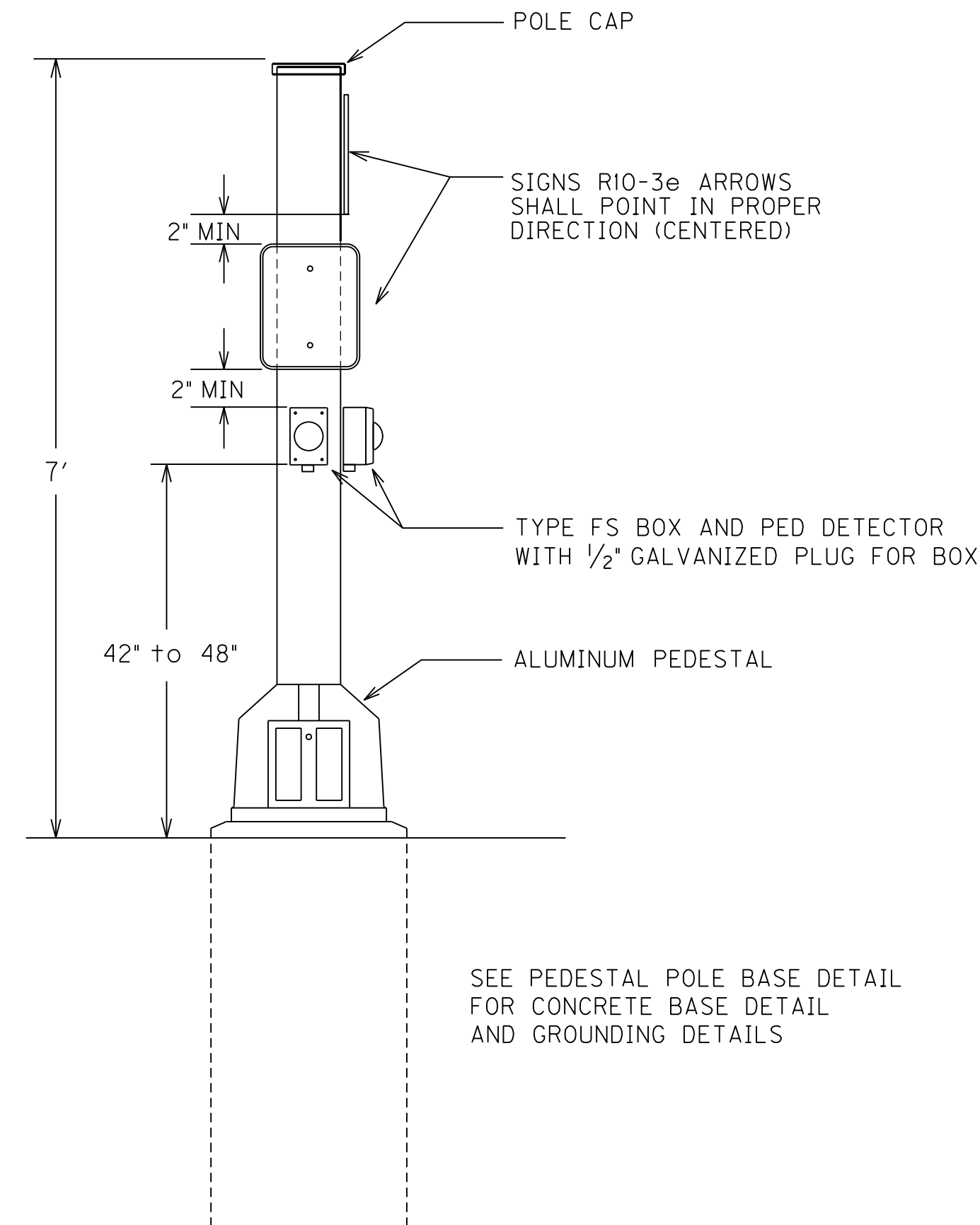
ITEM NO. 05-09030.00 COUNTY OF JEFFERSON
 SHEET NO. R021



- NOTES:**
1. THIS IS A MODIFIED VERSION OF MSD "DRAIN UNDER SIDEWALK TYPE 1" DRAWING NO. DS-01-01
 2. FORMWORK SHALL BE REMOVED AFTER CONCRETE HAS MET STRENGTH REQUIREMENT
 3. CONCRETE SHALL BE CLASS "A"
 4. SUBGRADE SHALL BE COMPACTED AND LOW AREAS FILL WITH KTC #8 OR #57 CRUSHED STONE
 5. DRAIN SHALL MAINTAIN 0.50% SLOPE OR GREATER
 6. FRAME SHALL BE SOLID LID OR APPROVED ADA COMPLIANT EQUAL WITH AN INDIVIDUAL LENGTH NO GREATER THAN 24" MEASURED DOWN THE CENTERLINE OF THE DRAIN. SUM OF FRAME LENGTHS SHALL EQUAL SIDEWALK WIDTH.
 7. THE DEPARTMENT WILL MAKE PAYMENT FOR THE COMPLETED AND ACCEPTED QUANTITY UNDER THE FOLLOWING:

CODE	PAY ITEM	PAY UNIT
25071ED	SIDEWALK UNDERDRAIN	EACH

SCALE: 1"= NTS

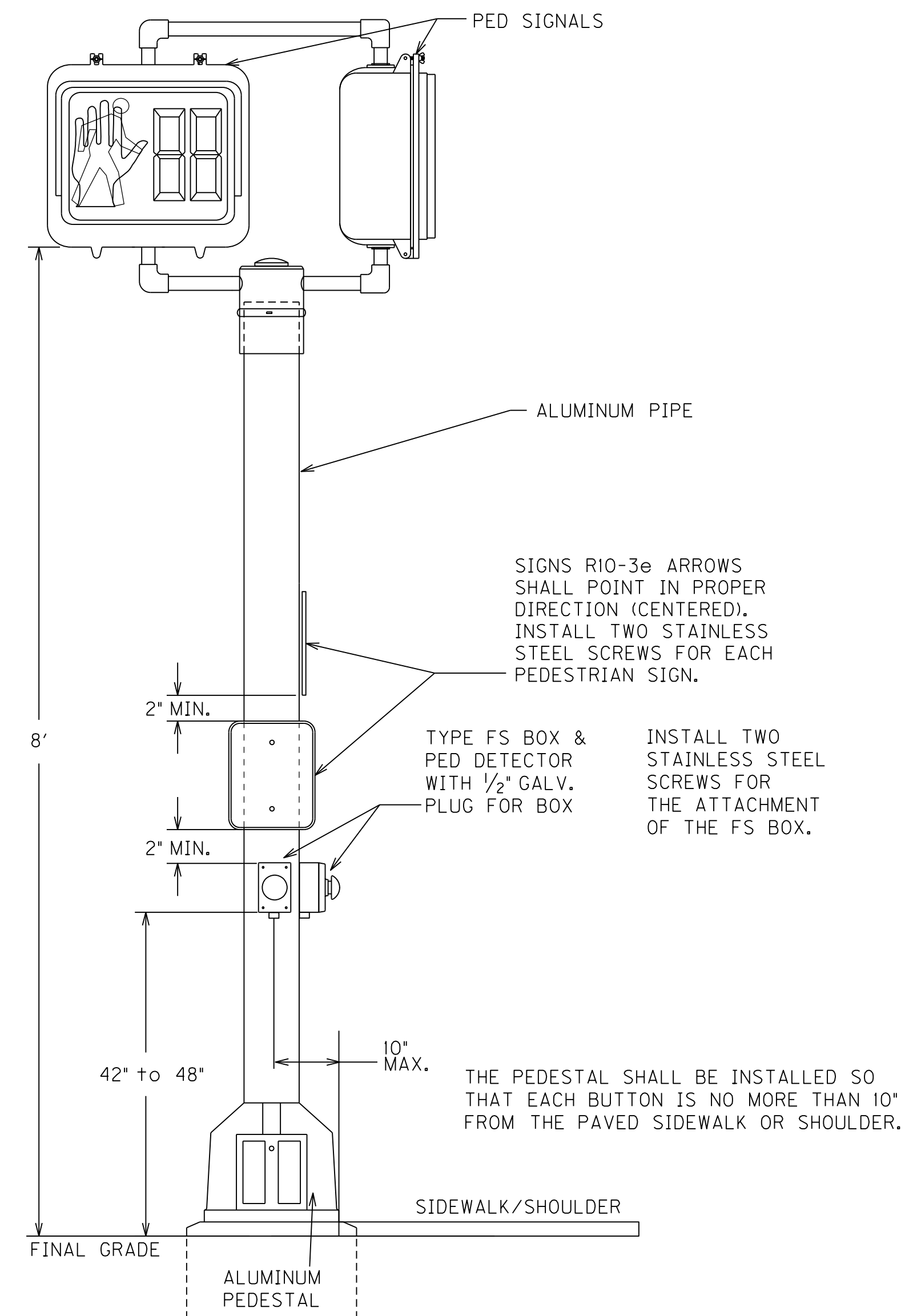


PEDESTAL POST DETAIL FOR PED DETECTORS & SIGNS

SPECIAL NOTE FOR TRANSFORMER DOOR:
 FURNISH A SHOCK HAZARD WARNING STICKER ON DISCONNECT WITH THE FOLLOWING INFORMATION:
 VOLTAGE (120 VOLT)
 GLOVE CLASS (0)
 LIMITED APPROACH BOUNDARY (42 IN)
 RESTRICTED APPROACH BOUNDARY (CONTACT)
 SEE NFPA 70E FOR ADDITIONAL PPE REQUIRED

NOTE:
 ALL GROUNDING AND SPARE CONDUITS THAT ARE INSTALLED IN THE CONCRETE PEDESTAL POLE BASE ARE INCIDENTAL TO BID ITEM '23222EC'. THIS INCLUDES PROVIDING A MINIMUM OF 24 INCHES OF CONDUIT PAST THE EDGE OF THE CONCRETE BASE. AN ARROW SHALL BE ETCHED INTO THE TOP OF THE PEDESTAL BASE TO SHOW LOCATION AND DIRECTION OF THE SPARE CONDUIT.

THERE SHALL BE A 2.5' (MIN.) X 4' (MIN.) CLEAR SPACE AT ALL PEDESTRIAN BUTTONS PER SECTION 404 OF PROWAG REQUIREMENTS.



PEDESTAL POLE DETAIL FOR PED DETECTORS AND PED SIGNALS

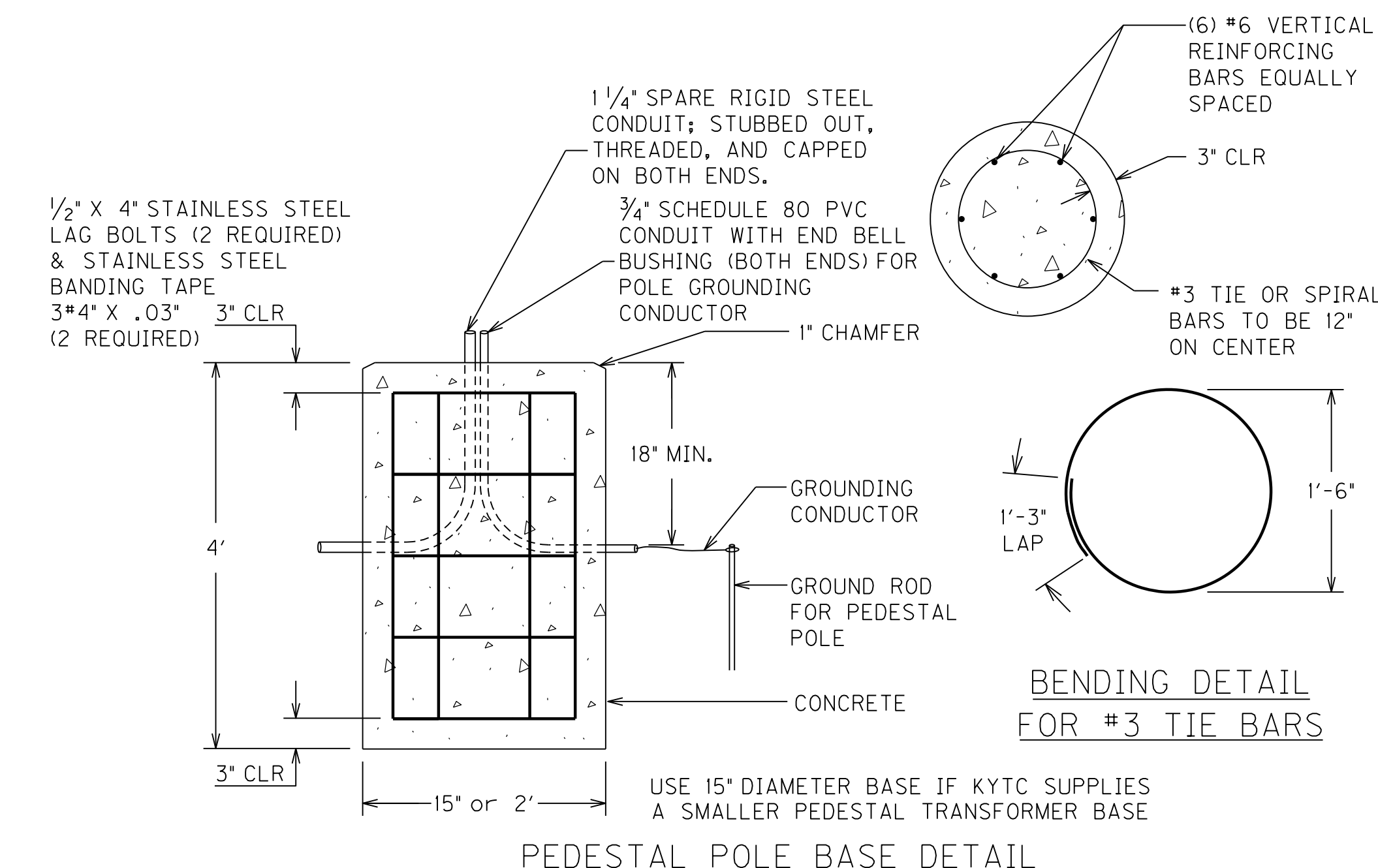
GROUNDING REQUIREMENTS:

CONTRACTOR SHALL PROVIDE A MINIMUM OF 6 INCHES OF GROUND WIRE FOR TESTING PRIOR TO CONNECTING THE WIRE TO THE TRANSFORMER BASE.

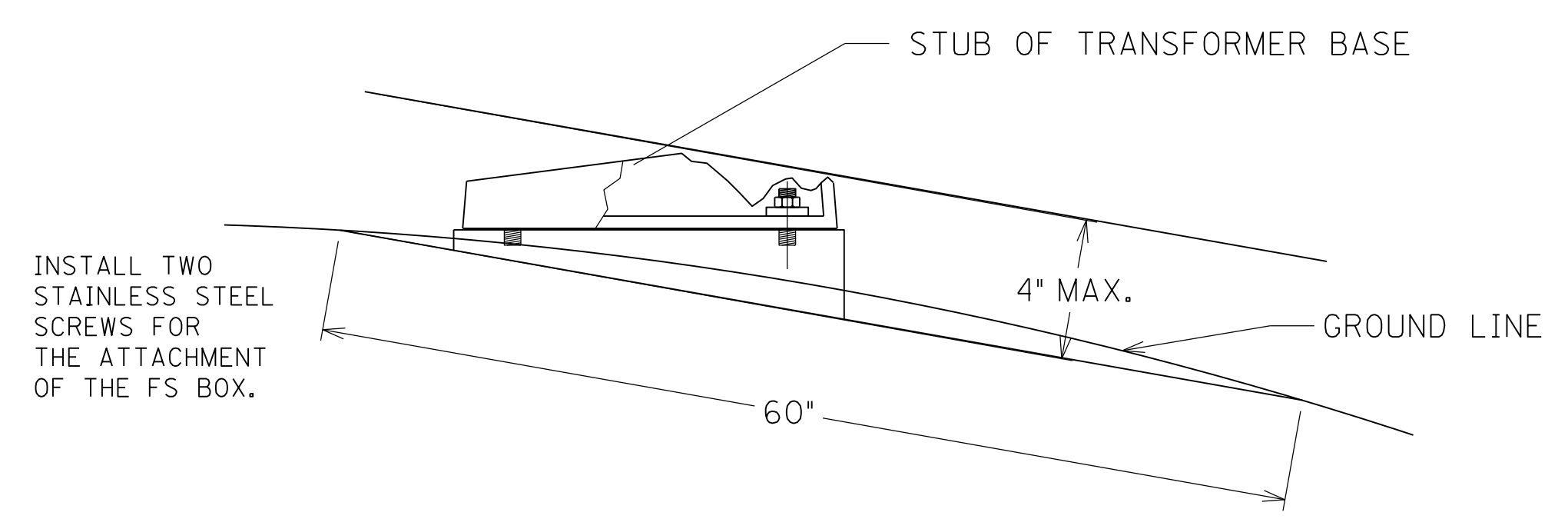
LEAVE TOP OF GROUND RODS EXPOSED FOR ELECTRICAL INSPECTION.

PEDESTAL POLE GROUND - GROUND WIRE SHALL COME FROM THE GROUND ROD THROUGH THE PVC CONDUIT, CONNECTING TO A GROUND LUG ON THE TRANSFORMER BASE AND THEN TO EACH RIGID STEEL GROUNDING BUSHING.
 ALL GROUND RODS SHALL BE 24" FROM THE CONCRETE POLE BASE.

THERE SHALL BE AT LEAST 4 FEET OF USABLE SIDEWALK IF A PORTION OF THE PEDESTAL BASE IS INSTALLED IN THE SIDEWALK. IF INSTALLED IN A SIDEWALK, THE PEDESTAL BASE SHALL BE INSTALLED FLUSH WITH THE GRADE.



PEDESTAL POLE BASE DETAIL



BREAKAWAY SUPPORT STUB HEIGHT MEASUREMENT

THE ANCHOR BOLTS AND CONDUITS SHALL NOT BE PROJECTED MORE 4 INCHES ABOVE A GROUND LINE BETWEEN THE STRADDLING WHEELS OF A VEHICLE.

NOTE:
 THE PEDESTAL BASE DOOR SHALL HAVE A 4" BY 6" SHOCK HAZARD WARNING STICKER (IF SMALLER TRANSFORMER BASE IS INSTALLED USE A 2" BY 3" INSTEAD). INSTALL 3" FROM THE TOP OF THE DOOR. THE STICKER SHALL BE METALCRAFT PLY695 PREM STYLEMARK LABEL WITH .007 THICKNESS, WITH UV WHITE POLYCARBONATE MATERIAL, AND WITH MC53FL PRESSURE SENSITIVE ADHESIVE OR APPROVAL EQUAL. THIS SHALL BE INCIDENTAL TO THE PROJECT.

SPECIAL NOTE FOR THE TRANSFORMER BASE:
 FURNISH A SHOCK HAZARD WARNING STICKER ON DISCONNECT WITH THE FOLLOWING INFORMATION:
 VOLTAGE (120 VOLT)
 GLOVE CLASS (0)
 LIMITED APPROACH BOUNDARY (42 IN)
 RESTRICTED APPROACH BOUNDARY (CONTACT)
 SEE NFPA 70E FOR ADDITIONAL PPE REQUIRED

PEDESTRIAN SIGNAL DETAIL